



## Brooke Avenue Stamford, PE9 2RU

Well presented, modern, 3 bedroom, 2 bathroom detached bungalow with a single garage, off street parking and a generous S-W facing rear garden situated on a quiet road in this highly sought after location close to the Town centre, local schools and amenities.

£1,475 Per Calendar Month

# Brooke Avenue

## Stamford, PE9 2RU



- 3 Bedroom Detached Bungalow
- Family Bathroom & Ensuite Shower Room
- EPC Rating D
- Large South West Facing Rear Garden
- Large Entrance Hall, Living Room and Conservatory
- Please refer to attached Key Facts for Tenants - Material Information Disclosures
- Single Garage + Off Street Parking
- Fitted Kitchen with Modern Appliances & New Boiler

### Entrance Hall

13 x 13.11 (3.96m x 3.96m.3.35m)

### Living Room

12 x 16.4 (3.66m x 4.88m.1.22m)

### Conservatory

12'11 x 9'8 (3.94m x 2.95m)

### Kitchen

9'6 x 10'4 (2.90m x 3.15m)

### Bedroom 1

11'6 x 11 (3.51m x 3.35m)

### Ensuite Shower Room

### Bedroom 2

11'2 x 10'7 (3.40m x 3.23m)

### Bedroom 3

11'2 x 13'7 (3.40m x 4.14m)

### Bathroom

6'3 x 6'3 (1.91m x 1.91m)

### Single Garage

### Off Street Parking

### Large Rear Garden



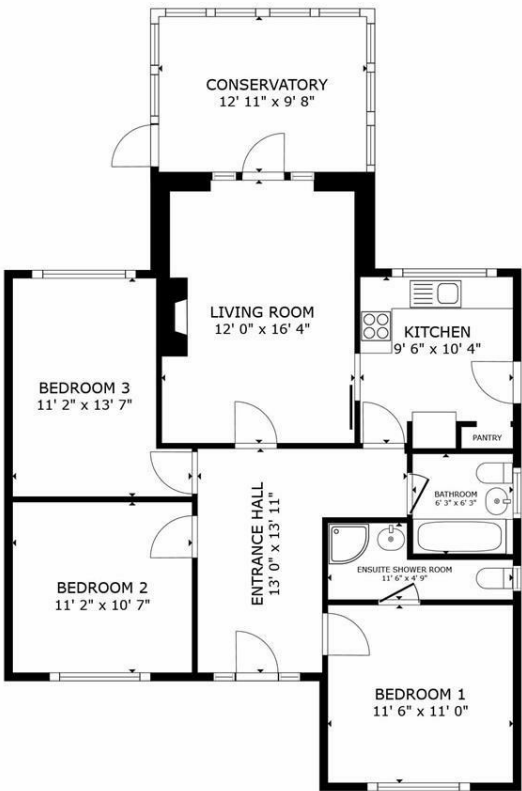
### Directions

Please use the following postcode for Sat Nav guidance - PE9 2RU





Floor Plan



FLOOR PLAN

GROSS INTERNAL AREA  
FLOOR PLAN 1,039 sq.ft.  
TOTAL : 1,039 sq.ft.

SIZES AND DIMENSIONS ARE APPROXIMATE, ACTUAL MAY VARY.

These particulars, whilst believed to be accurate are set out as a general outline only for guidance and do not constitute any part of an offer or contract. Intending purchasers should not rely on them as statements of representation of fact, but must satisfy themselves by inspection or otherwise as to their accuracy. No person in this firms employment has the authority to make or give any representation or warranty in respect of the property.

2-3 St Johns Street, Stamford, Lincs, PE9 2DA  
Tel: 01780 750000 Email: [info@goodwinproperty.co.uk](mailto:info@goodwinproperty.co.uk) [goodwinproperty.co.uk](http://goodwinproperty.co.uk)

