



Kesteven Road Stamford, PE9 1SX

Established 3 Bedroom Semi Detached house situated in this popular residential area close to the several Primary Schools, Stamford College and many local amenities. The property requires modernisation & refurbishment throughout but offers surprisingly spacious accommodation as well as further potential to extend - subject to planning permission.

£225,000

Kesteven Road

Stamford, PE9 1SX



- Established Semi Detached Home
- Potential to Extend STPP
- Large Rear Garden
- Popular Residential Area
- 2 Reception Rooms
- Off Road Parking for 2 Vehicles
- In Need of Modernisation
- 3 bedrooms
- Please Refer to Attached KFB For Material Information Disclosures

Entrance Hall

8'0" x 6'0" (2.44m x 1.83m)

Lounge

11'7" x 13'7" (3.53m x 4.14m)

Dining Room

9'7" x 11'1" (2.92m x 3.38m)

Kitchen

13'3" x 8'5" (4.04m x 2.57m)

Pantry

Landing

2'9" x 10'4" (0.84m x 3.15m)

Bedroom 1

12'7" x 12'2" (3.84m x 3.71m)

Bedroom 2

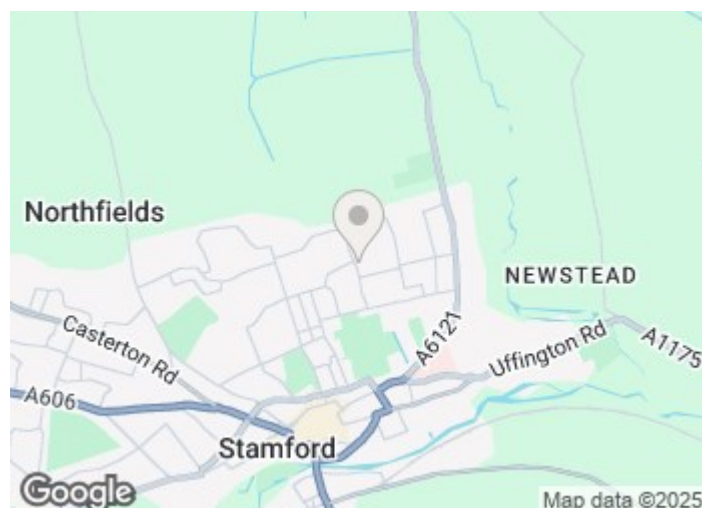
9'7" x 12'2" (2.92m x 3.71m)

Bedroom 3

12'7" x 7'4" (3.84m x 2.24m)

Family Bathroom

5'6" x 5'8" (1.68m x 1.73m)

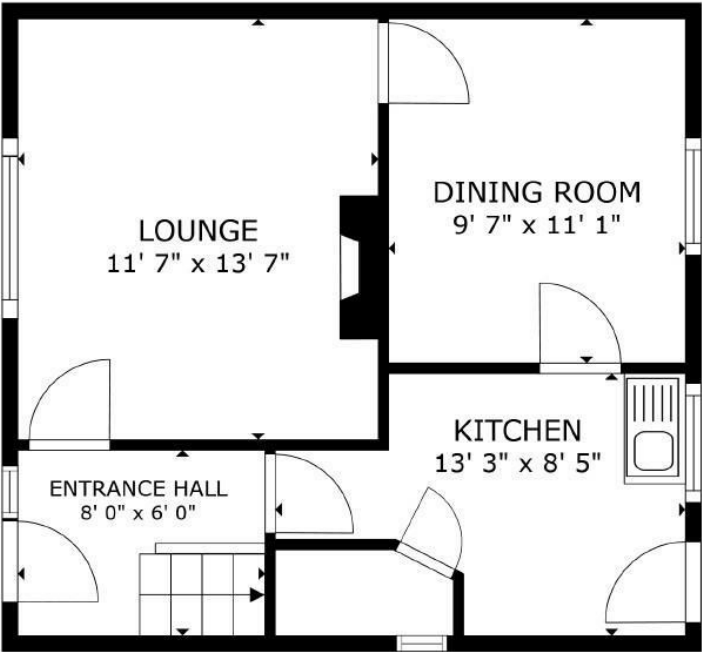


Directions

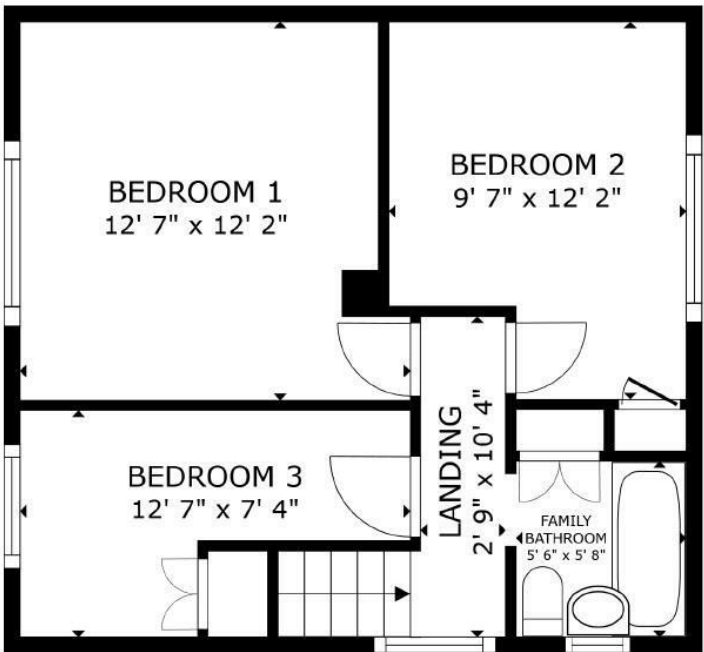
Please use the following postcode for Sat Nav guidance - PE9 1SX



Floor Plan



FLOOR 1



FLOOR 2

GROSS INTERNAL AREA
FLOOR 1 428 sq.ft. FLOOR 2 426 sq.ft.
TOTAL : 854 sq.ft.
SIZES AND DIMENSIONS ARE APPROXIMATE, ACTUAL MAY VARY.

These particulars, whilst believed to be accurate are set out as a general outline only for guidance and do not constitute any part of an offer or contract. Intending purchasers should not rely on them as statements of representation of fact, but must satisfy themselves by inspection or otherwise as to their accuracy. No person in this firms employment has the authority to make or give any representation or warranty in respect of the property.

2-3 St Johns Street, Stamford, Lincs, PE9 2DA
Tel: 01780 750000 Email: info@goodwinproperty.co.uk goodwinproperty.co.uk

