



## Warrenne Keep

Stamford, PE9 2NX

Set in the heart of this popular development, the property sits in a pleasant situation uniquely offering patio doors opening directly into a small private patio area with the larger communal gardens. The accommodation comprises: Entrance Hall, Living/Dining Room, Kitchen, Double Bedrooms and a Bathroom. Outside there are open gardens and grounds with one allocated off-street parking space.

Agent Note:  
Holding Deposit - £190  
Security Deposit - £952  
Local Authority - South Kesteven District Council  
Council Tax Band - C  
EPC Rating - C

£825 PCM

# Warrenne Keep

Stamford, PE9 2NX



- 1 Bedroom Ground Floor Flat
- EPC Rating C
- Gas Central Heating
- Small Private Patio Area within Larger Communal Gardens
- Please read attached brochure for Material Information Disclosures.
- Inbuilt storage to Bedroom
- One Allocated Parking Space
- Close to Town Centre & Amenties

## Entrance Hall

## Living Room

14'10" x 14'3" (4.52 x 4.34)

## Bedroom

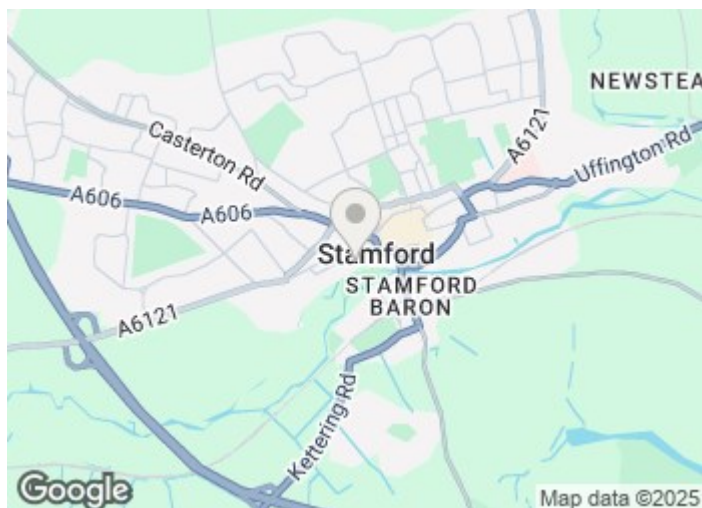
12'5" x 14'1" (3.78 x 4.29)

## Bathroom

5'8" x 6'3" (1.73 x 1.91)

## Allocated Parking Space

## Small Private Patio Area



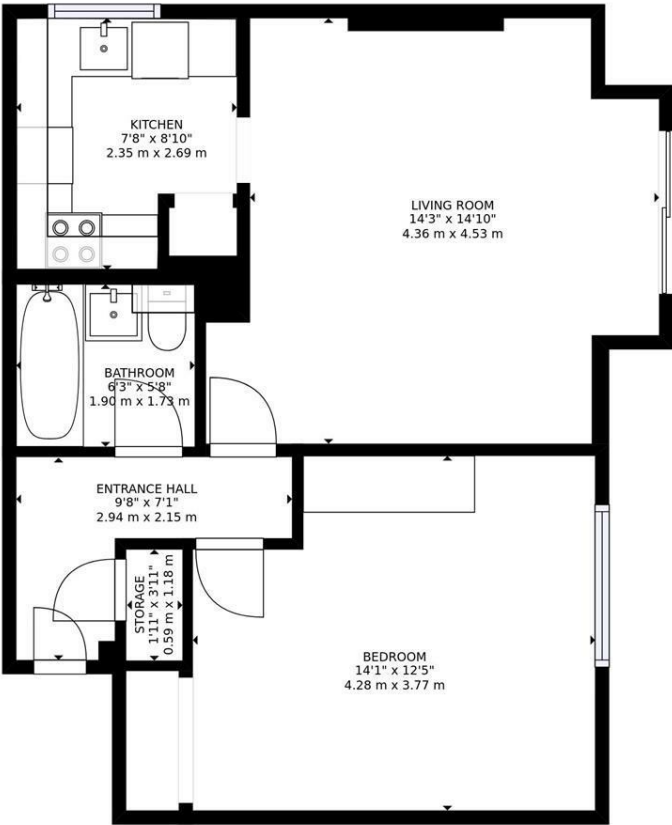
## Directions

Please use the following postcode for Sat Nav guidance - PE9 2NX





Floor Plan



GROSS INTERNAL AREA  
FLOOR 1: 557 sq. ft. 52 m2  
TOTAL: 557 sq. ft. 52 m2

SIZES AND DIMENSIONS ARE APPROXIMATE, ACTUAL MAY VARY

FLOOR 1



These particulars, whilst believed to be accurate are set out as a general outline only for guidance and do not constitute any part of an offer or contract. Intending purchasers should not rely on them as statements of representation of fact, but must satisfy themselves by inspection or otherwise as to their accuracy. No person in this firms employment has the authority to make or give any representation or warranty in respect of the property.

2-3 St Johns Street, Stamford, Lincs, PE9 2DA  
Tel: 01780 750000 Email: [info@goodwinproperty.co.uk](mailto:info@goodwinproperty.co.uk) [goodwinproperty.co.uk](http://goodwinproperty.co.uk)

