



St. Marys Hill

Stamford, PE9 2DP

Lovely second-floor, one-bedroom apartment located in the centre of the historic Market Town of Stamford with an open plan living/kitchen area offering views towards The Town Hall, and St. Mary's Church, a double bedroom with en-suite bathroom and views towards Stamford Meadows and an additional WC all accessed via the communal entry to the rear.

£895 Per Calendar Month

St. Marys Hill

Stamford, PE9 2DP



- One Bedroom Apartment with Impressive Views
- Hallway with Separate WC
- EPC Rating E
- Vaulted Ceilings to Living Area and Bedroom
- One Double Bedroom with En-suite Bathroom
- Please refer to attached Material Information (KFT) below for material disclosures
- Open Plan Living / Kitchen / Diner
- Central Stamford Location
- Residents parking permit scheme is available nearby subject to availability.

Entrance Hall

Ensuite Bathroom

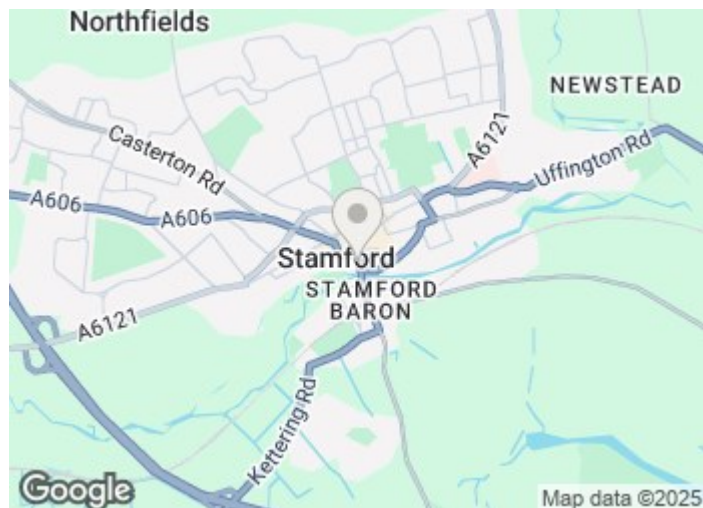
Open Plan Kitchen/Dining/Living Room

Cloakroom

14'10 x 45'5 (4.52m x 13.84m)

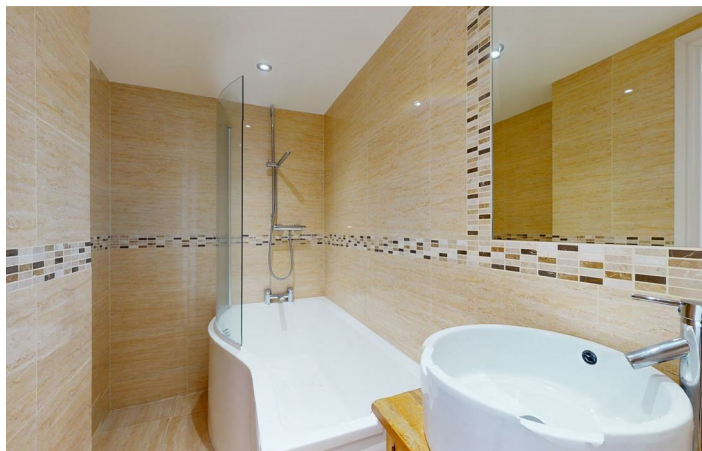
Bedroom

14'6 x 13'9 (4.42m x 4.19m)

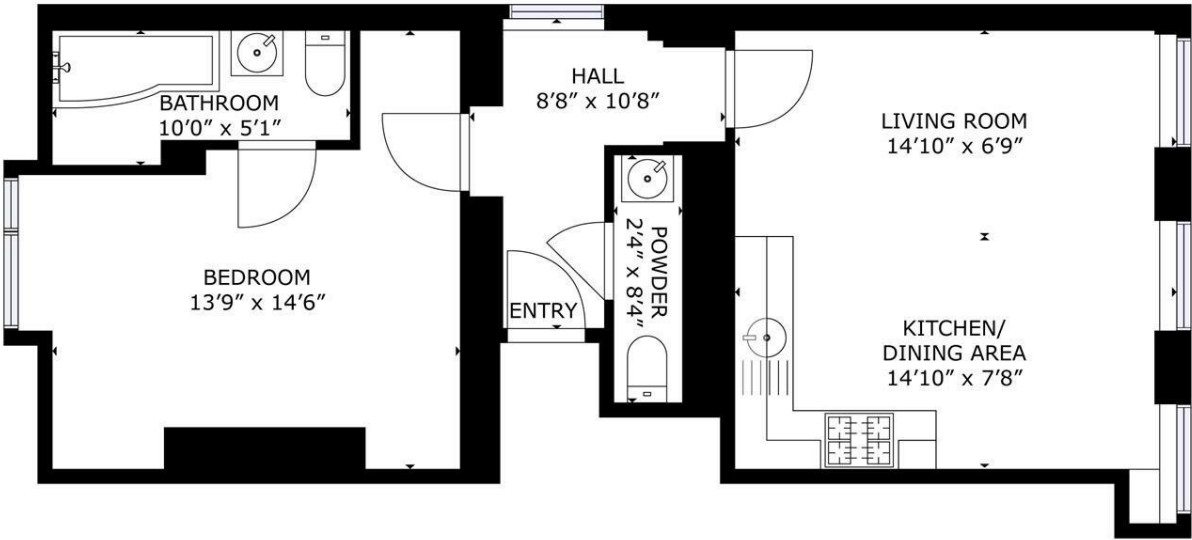


Directions

Please use post code PE9 2DP for Sat-Nav assistance



Floor Plan



FLOOR 1

GROSS INTERNAL AREA
TOTAL: 527 sq.ft
SIZES AND DIMENSIONS ARE APPROXIMATE, ACTUAL MAY VARY.



These particulars, whilst believed to be accurate are set out as a general outline only for guidance and do not constitute any part of an offer or contract. Intending purchasers should not rely on them as statements of representation of fact, but must satisfy themselves by inspection or otherwise as to their accuracy. No person in this firms employment has the authority to make or give any representation or warranty in respect of the property.

2-3 St Johns Street, Stamford, Lincs, PE9 2DA
Tel: 01780 750000 Email: info@goodwinproperty.co.uk goodwinproperty.co.uk

