



Redcot Mews

Stamford, PE9 1DE

The property has the added benefit of its own entrance from the car park directly into the flat. The accommodation of this flat briefly comprises; Entrance Hall with 2 storage cupboards, Living Room with wood effect floor and patio doors to communal Garden, Kitchen, 2 Bedrooms, and a Refitted Shower Room. Outside - There is a small Communal Garden Area, Bin Store/Clothes Drying Area, and the numbered Allocated Parking Space.

Agents Note:
Local Authority – South Kesteven
Council Tax Band – A
EPC Rating - D

£875 Per Month

Redcot Mews

Stamford, PE9 1DE



- Well Presented Ground Floor Flat
- Allocated Parking Space
- Close to Stamford's Town Centre
- Communal Garden
- Private Entrance
- 2 Bedrooms
- Please Refer to Attached KFT For Material Information Disclosures

Entrance Hall

3'0" x 19'8" (0.91m x 5.99m)

Living Room

14'1" x 11'9" (4.29m x 3.58m)

Kitchen

8'4" x 7'9" (2.54m x 2.36m)

Bedroom 1

14'1" x 7'11" (4.29m x 2.41m)

Bedroom 2

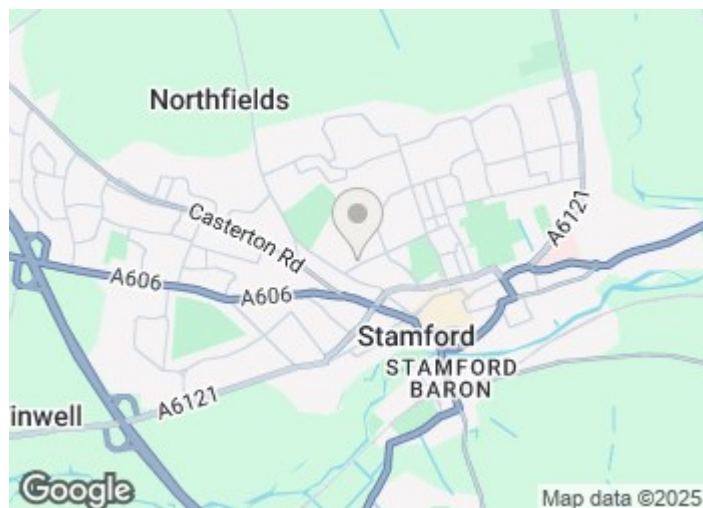
6'5" x 8'7" (1.96m x 2.62m)

Shower Room

5'5" x 7'9" (1.65m x 2.36m)

1x Allocated Parking Space

Communal Garden



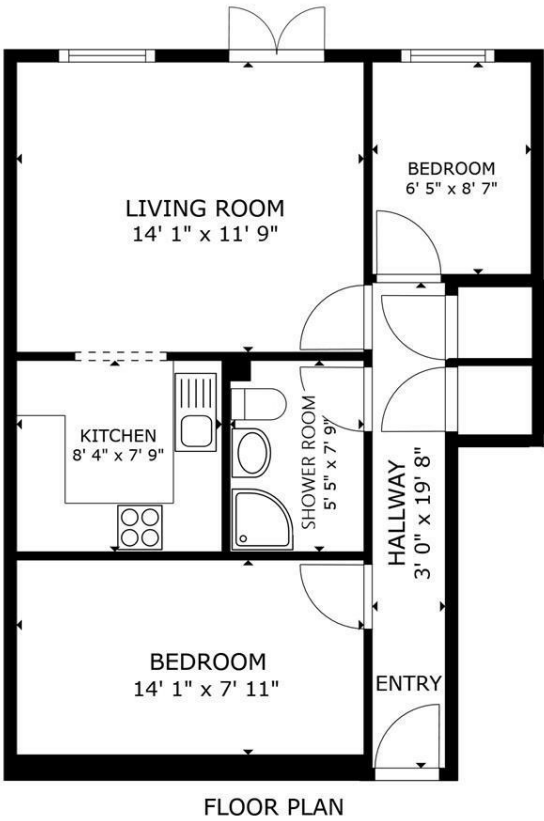
Directions

Please use the following postcode for Sat Nav guidance - PE9 1DE





Floor Plan



GROSS INTERNAL AREA
FLOOR PLAN 519 sq.ft.
TOTAL : 519 sq.ft.
SIZES AND DIMENSIONS ARE APPROXIMATE, ACTUAL MAY VARY.

These particulars, whilst believed to be accurate are set out as a general outline only for guidance and do not constitute any part of an offer or contract. Intending purchasers should not rely on them as statements of representation of fact, but must satisfy themselves by inspection or otherwise as to their accuracy. No person in this firms employment has the authority to make or give any representation or warranty in respect of the property.

2-3 St Johns Street, Stamford, Lincs, PE9 2DA
Tel: 01780 750000 Email: info@goodwinproperty.co.uk goodwinproperty.co.uk

