



Redcot Mews

Stamford, PE9 1DE

This Two Bedroom Ground Floor flat is located in this popular residential area and is situated just half a mile on foot from Stamford's Town Centre which provides amenities of shops, bars, restaurants, schools and a train station. The property is well presented throughout and has been recently re-decorated. The flat sits in well maintained gardens, with 1 allocated parking space at the rear.

£179,950

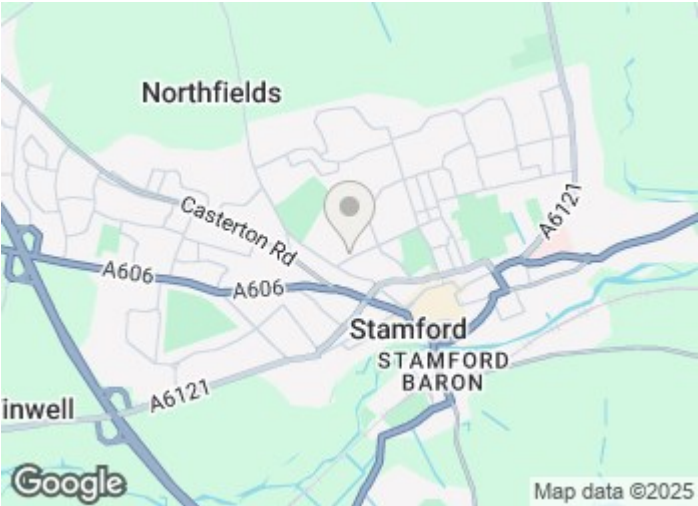
Redcot Mews

Stamford, PE9 1DE



- Well Presented Ground Floor Flat
- Communal Garden
- 2 Bedrooms
- Allocated Parking Space
- Private Entrance
- Refitted Shower Room
- Close to Stamford's Town Centre
- Living Room
- Please Refer to Attached KFB For Material Information Disclosures

Entrance Hall	Bedroom 1	1x Allocated Parking Space
3'0" x 19'8" (0.91m x 5.99m)	14'1" x 7'11" (4.29m x 2.41m)	Communal Garden
Living Room	Bedroom 2	
14'1" x 11'9" (4.29m x 3.58m)	6'5" x 8'7" (1.96m x 2.62m)	
Kitchen	Shower Room	
8'4" x 7'9" (2.54m x 2.36m)	5'5" x 7'9" (1.65m x 2.36m)	



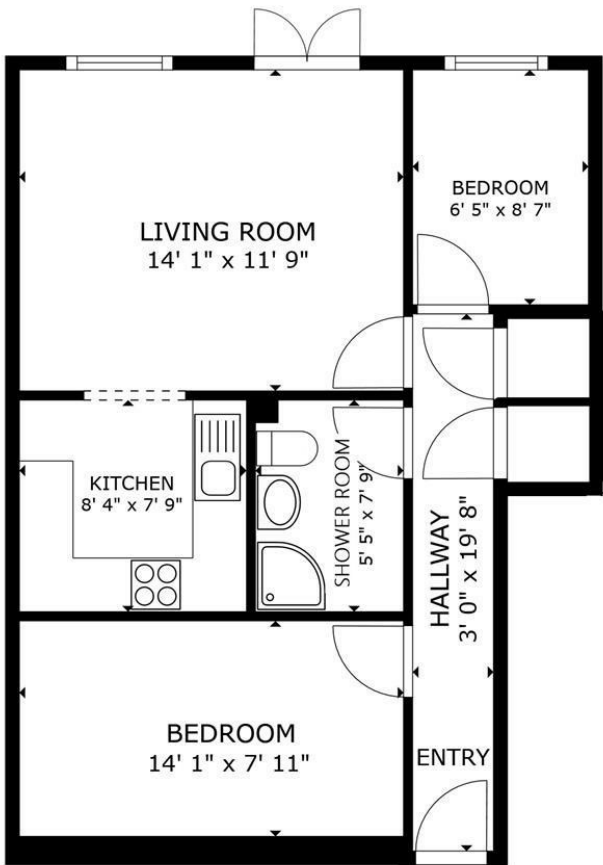
Directions

Please use the following postcode for Sat Nav guidance - PE9 1DE





Floor Plan



FLOOR PLAN

GROSS INTERNAL AREA
FLOOR PLAN 519 sq.ft.
TOTAL : 519 sq.ft.
SIZES AND DIMENSIONS ARE APPROXIMATE, ACTUAL MAY VARY.

These particulars, whilst believed to be accurate are set out as a general outline only for guidance and do not constitute any part of an offer or contract. Intending purchasers should not rely on them as statements of representation of fact, but must satisfy themselves by inspection or otherwise as to their accuracy. No person in this firms employment has the authority to make or give any representation or warranty in respect of the property.

2-3 St Johns Street, Stamford, Lincs, PE9 2DA
Tel: 01780 750000 Email: info@goodwinproperty.co.uk goodwinproperty.co.uk

