



Riverside Place Stamford, PE9 2DX

This lovely light and airy purpose built 3 bedroom apartment sits in the heart of Stamford, just a few minutes walk from the High Street and the Town's many local amenities as well as the nearby Train Station, and offers deceptively generous space which really must be viewed to fully appreciate.

£1,395 PCM

Riverside Place

Stamford, PE9 2DX



- Purpose Built First Floor Apartment
- Bathroom and Ensuite Shower to Master
- Juliet Balcony Overlooking Communal Courtyard
- Available from Viewings 23 July 2024
- 3 Double Bedrooms
- Allocated Parking for One Car
- 23' Open Plan Living/Dining/Kitchen
- Centrally Located
- Please refer to attached Key Facts for Tenants for Material Information Disclosures

Entrance Hallway

22'7" x 7'3" (6.89m x 2.22m)

Open Plan Living/Dining/Kitchen

22'6" x 23'3" (6.88 x 7.09)

Bedroom 1

11'9 x 11'8 (3.58m x 3.56m)

Ensuite Shower Room

Bedroom 2

9'11" x 11'8" (3.02m x 3.56m)

Bedroom 3

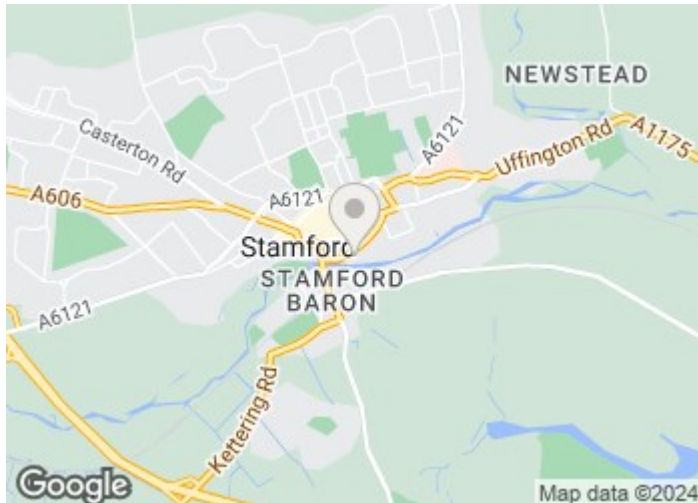
11'1" x 8'3" (3.40m x 2.52m)

Bathroom

6'10" x 8'3" (2.08m x 2.51m)

Boiler Room

Off Street Allocated Parking - 1 Car

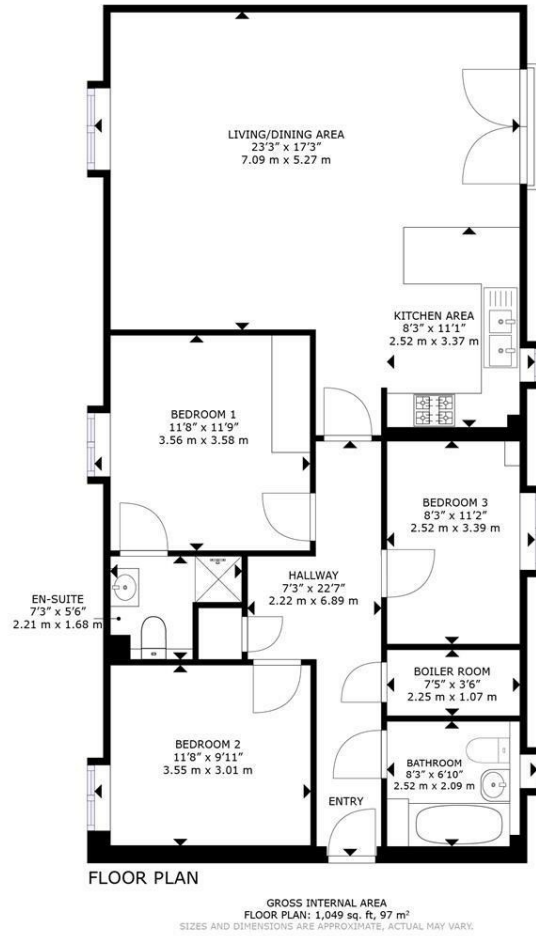


Directions

Please use postcode PE9 2DX for sat-nav directions



Floor Plan



These particulars, whilst believed to be accurate are set out as a general outline only for guidance and do not constitute any part of an offer or contract. Intending purchasers should not rely on them as statements of representation of fact, but must satisfy themselves by inspection or otherwise as to their accuracy. No person in this firm's employment has the authority to make or give any representation or warranty in respect of the property.

2-3 St Johns Street, Stamford, Lincs, PE9 2DA
 Tel: 01780 750000 Email: info@goodwinproperty.co.uk goodwinproperty.co.uk

Energy Efficiency Rating		
	Current	Potential
Very energy efficient - lower running costs		
(92 plus) A		
(81-91) B	82	84
(69-80) C		
(55-68) D		
(39-54) E		
(21-38) F		
(1-20) G		
Not energy efficient - higher running costs		
England & Wales	EU Directive 2002/91/EC	