



**Flat 15 Belfry House, Blackbess Lane, Chertsey, Surrey, KT16 9QF**

**£270,000**

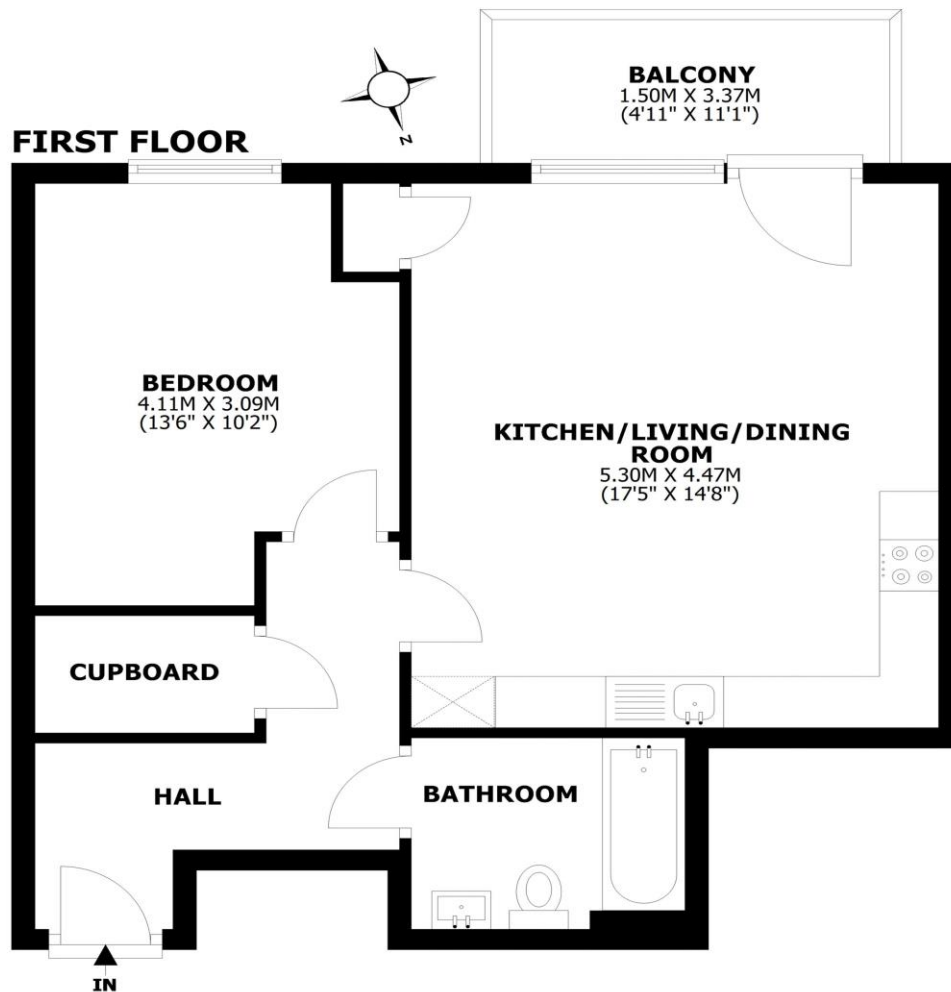




## Belfry House, Blackbess Lane, Chertsey, KT16

Total internal area: approx. 50 sq. metres (537.8 sq. feet)

Balcony: approx. 5.0 sq. metres (54.3 sq. feet)



This floorplan is for illustrative guidance only and is not to drawn to scale. Whilst every attempt has been made to ensure accuracy, it is approximate and should not be relied upon as a matter of fact. Maximum dimensions are given excluding small alcoves, etc unless

A fantastic one-bedroom flat situated on the first floor of a modern development built by Barratt Homes in 2021. The property has been finished to an excellent standard throughout, featuring a sleek modern design with quality fixtures and fittings. The living room is open plan with the kitchen, which includes integrated appliances, and provides access to the balcony. The bedroom is a well-proportioned double with space for a wardrobe and a panelled wall finish. The luxury bathroom offers a shower over the bath, and there is also a large hallway cupboard providing excellent storage. Further benefits include an allocated parking space, secure entry system, lift access to all floors, and a long 999-year lease from new. The location is quiet with plenty of surrounding greenery, yet remains very convenient for Chertsey mainline station and the High Street. Superb road and airport links are close by, as is St Peter's Hospital. EPC Rating B.





**AGENTS NOTES:** These details do not constitute any part of an offer or contract. In issuing them we do not have any authority to give any warranty or representation whatsoever in respect of this property. These details are provided without any responsibility on our part or the part of the vendors. No statements in these details are to be relied upon as representations of fact and purchasers should satisfy themselves by inspection or otherwise as to the accuracy of the statements contained therein.

**Equipment:** We have not tested the equipment or central heating system mentioned in these particulars and purchasers are advised to satisfy themselves as to their working order and condition.

**Measurements:** Great care is taken when measuring but measurements should not be relied upon for ordering carpets, equipment, etc.