



8 Queensborough House South Oatlands Chase Weybridge Surrey KT13 9SF

£495,000

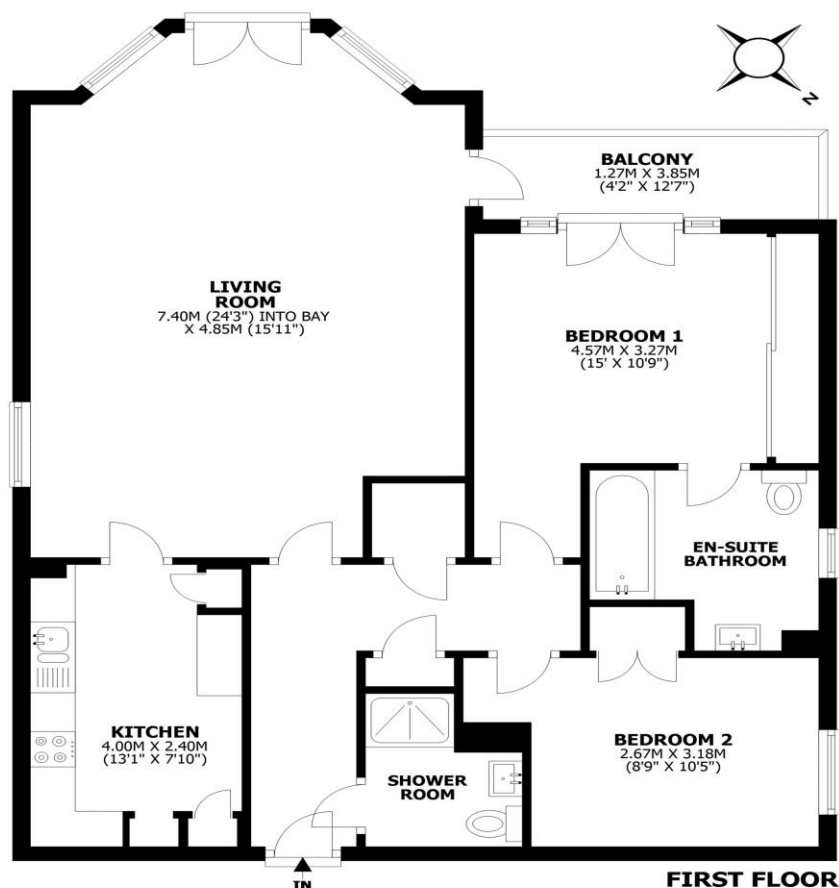




Queensborough House, Oatlands Chase, Weybridge, KT13

Total internal area: approx. 86.0 sq. metres (925.6 sq. feet)

Balcony area: approx. 4.9 sq. metres (52.7 sq. feet)



This floorplan shows maximum dimensions, excluding small alcoves etc unless otherwise stated. Measurements are approximate and are given as a guide only. They are not intended to be used for carpet sizes, window furnishings, appliance sizes, or items of furniture.

For sale with no onward chain, a first-floor, two-bedroom apartment within this highly regarded, secure block within Weybridge. Lift access, underground parking, secure gates, and lovely communal grounds are all on offer. Internally this is a great apartment with a very safe, secure, and private feel to it. There are two double bedrooms both with built-in wardrobes, the main bedroom also has an en-suite shower room and balcony. The main living room is spacious with a lovely outlook across the communal gardens and access onto an additional balcony space. The kitchen is offset from the living room and contains fully integrated units. There is a main bathroom with a modern walk-in shower unit and the en-suite has a bath with shower over. Everything is in good order and has been previously modernised. There is a lift directly down to the underground car park, where you have one allocated parking space, and there are visitors' spaces also. The block is securely gated for extra peace of mind. Well-located on Oatlands Chase, a very popular road within the Oatlands region of Weybridge. Equidistant between both Weybridge and Walton town centres and train stations, making this a great location for accessibility and convenience.

EPC Rating B.



AGENTS NOTES: These details do not constitute any part of an offer or contract. In issuing them we do not have any authority to give any warranty or representation whatsoever in respect of this property. These details are provided without any responsibility on our part or the part of the vendors. No statements in these details are to be relied upon as representations of fact and purchasers should satisfy themselves by inspection or otherwise as to the accuracy of the statements contained therein.

Equipment: We have not tested the equipment or central heating system mentioned in these particulars and purchasers are advised to satisfy themselves as to their working order and condition.

Measurements: Great care is taken when measuring but measurements should not be relied upon for ordering carpets, equipment, etc.