

Chapters



43 UPPER WASHER LANE HALIFAX

£230,000
FREEHOLD

Nestled in the desirable area of Upper Washer Lane, Halifax, this stunning mid-terrace house offers a perfect blend of comfort and style. Spanning an impressive 1,507 square feet, the property boasts two spacious reception rooms, ideal for both relaxation and entertaining. The three well-proportioned bedrooms provide ample space for family living while the modern bathroom ensures convenience and comfort. This home has been decorated to a high standard, showcasing a tasteful design that enhances its charm and appeal. Every corner of the property reflects a commitment to quality, making it a delightful place to call home. The inviting atmosphere is complemented by an abundance of natural light, creating a warm and welcoming environment. Situated in a sought-after location, this property is not only a beautiful residence but also offers easy access to local amenities, schools, and transport links, making it an ideal choice for families and professionals alike. With its ready-to-move-in condition, you can settle in without the hassle of renovations or repairs. In summary, this exceptional mid-terrace house on Upper Washer Lane is a rare find, combining modern living with classic charm in a prime location. Don't miss the opportunity to make this stunning property your new home.



• THREE BEDROOM PROPERTY • MID TERRACE • SPACIOUS FAMILY HOME • SET OVER FOUR FLOORS

Entrance

Access via a composite front door with staircase to the first floor and door to:

Living Room

Spacious, bright room with double glazed window to the front and rear, two radiators and feature inset fireplace.

Door leading to:

Lower Ground Floor

Kitchen / Sitting Room

This room is split level and spans the length of the property.

The sitting room has a radiator, inset spot lighting feature fireplace and then a few steps lead down to the kitchen where there are matching wall and base units along with complementary work surfaces incorporating a stainless steel sink and drainer. Integrated oven, induction hob and extractor hood above. Space for a fridge freezer and plumbing for a washing machine. Double glazed window offering far reaching views and UPVc door leading to the rear garden and further door to:

WC

With a two in one WC and integrated sink.

First Floor

Landing space with radiator and door to:

Bedroom Two

Double room with double glazed window to the front and radiator.

Bedroom Three

Further good sized room with double glazed window to the rear and radiator.

Bathroom

Three piece modern suite with WC, wash basin and integrated vanity unit, paneled bath with shower overhead. Part tiled walls, frosted double glazed window and chrome heated towel rail.

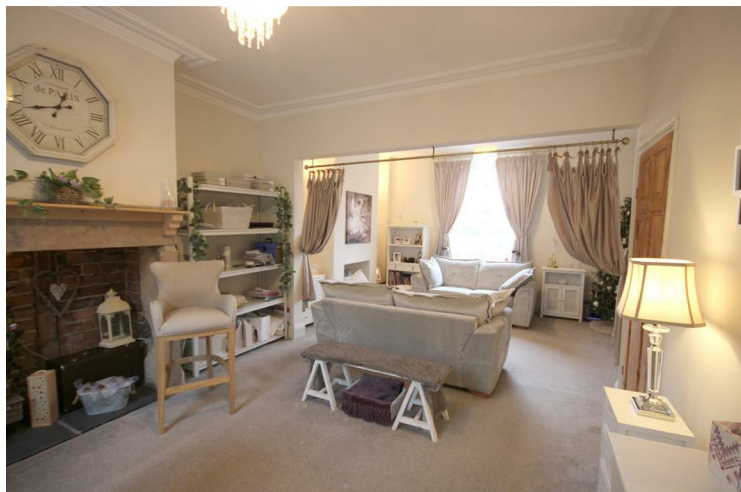
Second Floor

Bedroom One

Master bedroom with velux window and radiator. Feature brick chimney breast and ample eave storage creating storage space.

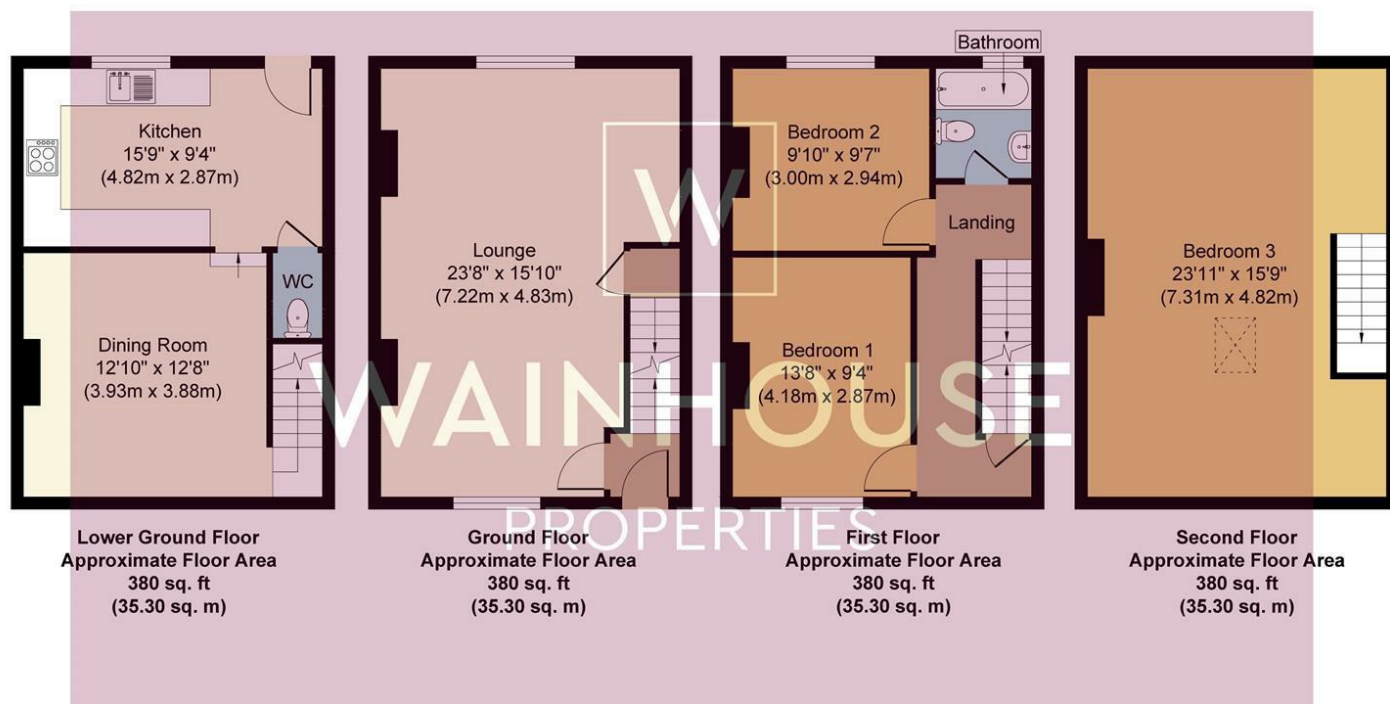
External

To the front there is a paved yard area with path leading to the front door and to the rear there is an enclosed garden with artificial grass and fence surround along with far reaching views.



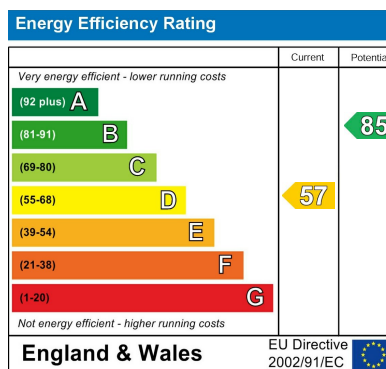
- LARGE LIVING ROOM • SPACIOUS KITCHEN DINER • DOWNSTAIRS WC • THREE PIECE BATHROOM SUITE • ENCLOSED GARDEN TO THE REAR • FAR REACHING VIEWS





Whilst every attempt has been made to ensure the accuracy of the floor plan contained here, measurements of doors, windows, rooms and any other items are approximate and no responsibility is taken for any error, omission, or mis-statement. The measurements should not be relied upon for valuation, transaction and/or funding purposes. This plan is for illustrative purposes only and should be used as such by any prospective purchaser or tenant. The services, systems and appliances shown have not been tested and no guarantee as to their operability or efficiency can be given.

Copyright V360 Ltd 2024 | www.houseviz.com



Agents Note: Whilst every care has been taken to prepare these particulars, they are for guidance purposes only. All measurements are approximate and are for general guidance purposes only and whilst every care has been taken to ensure their accuracy, they should not be relied upon and potential buyers/tenants are advised to recheck the measurements

Chapters
40 Wharf Street
Sowerby Bridge
HX6 2AE

01422 652 317
hello@chaptersgroup.co.uk
<https://chaptersgroup.co.uk/>

Chapters