



WAINHOUSE
PROPERTIES



11 WOODROYD GARDENS LUDDENDENFOOT

£150,000
FREEHOLD

New to market is this charming mid-terrace house located in the picturesque Woodroyd Gardens, Luddendenfoot. Upon entering, you are greeted by a kitchen, dining area and cosy living room, perfect for relaxing or entertaining guests. The property boasts two lovely bedrooms, ideal for a small family or as a guest room/home office combination. The house features a well-maintained bathroom, ensuring convenience and comfort, with a total of 797 sq ft of living space, there is ample room to move around and make this house your home. Built in 1935, this house exudes character and charm while offering modern amenities for contemporary living. The gardens to the front and rear of the property provide great outdoor space. One of the highlights of this property is the loft space, complete with a drop-down ladder and skylight. Don't miss the opportunity to own this delightful house in Woodroyd Gardens. Contact us today to arrange a viewing and take the first step towards making this property your new home.



• MID TERRACE PROPERTY • TWO BEDROOMS • KITCHEN DINER • SPACIOUS LIVING ROOM

Kitchen Diner

Access via a PVCu front door, fitted cupboards incorporating a stainless steel sink and drainer. Free standing cooker and under unit fridge and freezer, Large storage cupboards to the dining area, double glazed window to the front and radiator. Door to:

Living Room

With large double glazed window overlooking the rear garden, fire place with decorative surround, wall lighting, radiators and door to:

First Floor

with loft access point and door to:

Bedroom One

Double room with double glazed window to the rear, fitted wardrobes and good sized storage cupboard.

Bedroom Two

Further double with double glazed window to the front and radiator.

Bathroom

Three piece suite comprising of WC, wash basin and bath with shower over head. Chrome towel rail and frosted double glazed window.

Attic Room

Versatile room which could be used as an office space or snug area, drop down ladder from the first floor landing, lighting and sky light window.

External

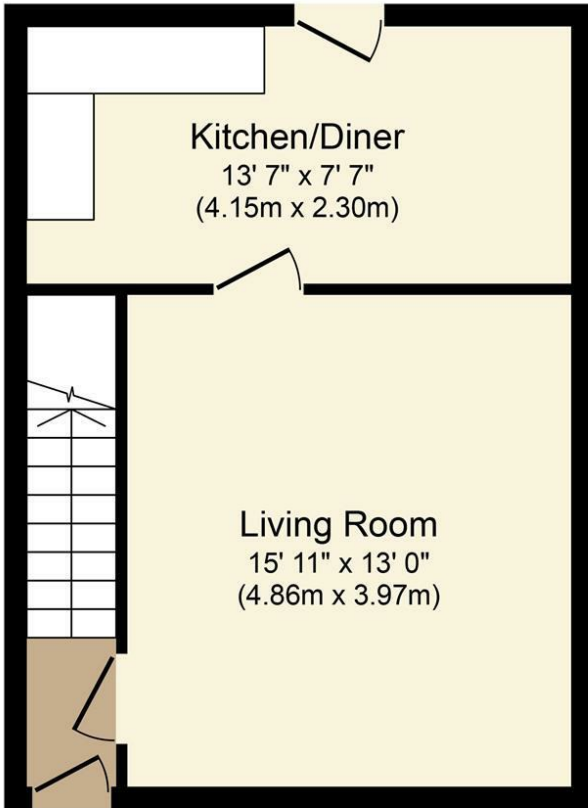
To the front there is a paved area with steps to the front

door and gated access. The rear is tiered and has a paved patio, garden shed and seating area.

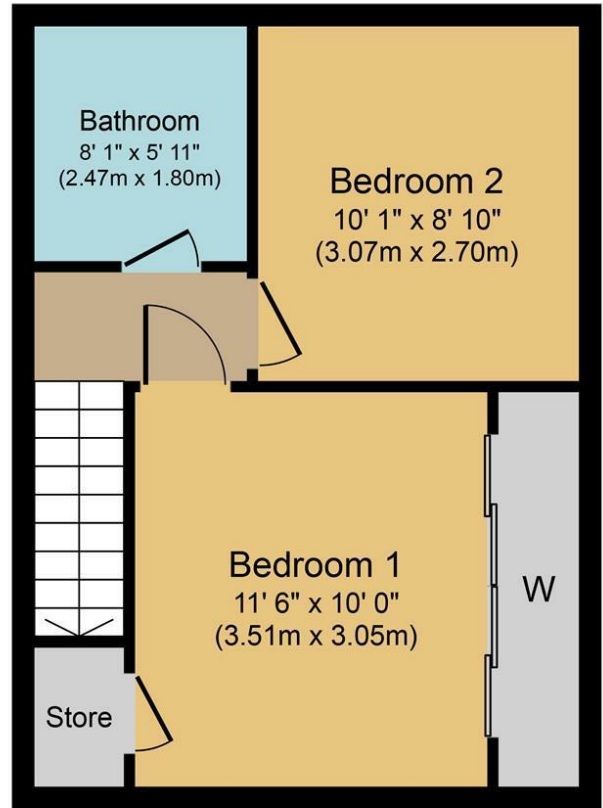


• THREE PIECE BATHROOM • CONVERTED ATTIC ROOM • YARD TO THE FRONT • GARDEN TO THE REAR





Ground Floor
Approximate Floor Area
356 sq. ft.
(33.1 sq. m.)

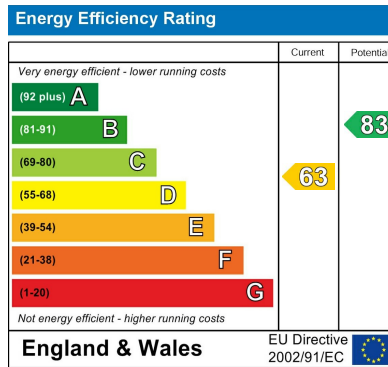


First Floor
Approximate Floor Area
356 sq. ft.
(33.1 sq. m.)



Whilst every attempt has been made to ensure the accuracy of the floor plan contained here, measurements of doors, windows, rooms and any other items are approximate and no responsibility is taken for any error, omission, or mis-statement. The measurements should not be relied upon for valuation, transaction and/or funding purposes. This plan is for illustrative purposes only and should be used as such by any prospective purchaser or tenant. The services, systems and appliances shown have not been tested and no guarantee as to their operability or efficiency can be given.

Copyright V360 Ltd 2024 | www.houseviz.com



Agents Note: Whilst every care has been taken to prepare these particulars, they are for guidance purposes only. All measurements are approximate and are for general guidance purposes only and whilst every care has been taken to ensure their accuracy, they should not be relied upon and potential buyers/tenants are advised to recheck the measurements

Croft Myl
Croft Myl West Parade
Halifax
HX1 2EQ

01422 652 317
sales@wainhouseproperties.co.uk
<https://wainhouseproperties.co.uk/>

