



BOTT'S MEWS
NOTTING HILL W2
£1,600,000 STC



3 BEDROOMS, 2 BATHROOMS, STUDIO/WORKSPACE, KITCHEN/RECEPTION, CLOAKROOM, TWO TERRACES, UNDERGROUND PARKING.













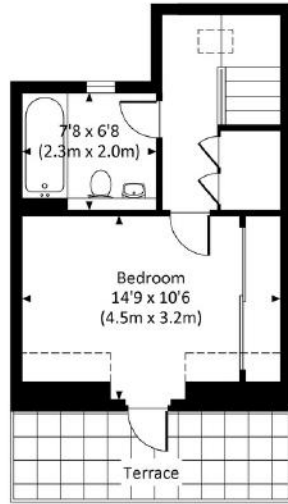
A spacious three bedroom house moments from Westbourne Grove, with over 1700 sq ft living space plus secure underground parking. This generously proportioned property offers flexible accommodation over four floors and includes a large live/work ground floor area.

On the first floor there is an equally large kitchen and open plan living area, making this a perfect house for entertaining. The three double bedrooms are serviced by two well appointed bathrooms and there are terraces located on the second and third floors. The house also benefits from air conditioning and underfloor heating.

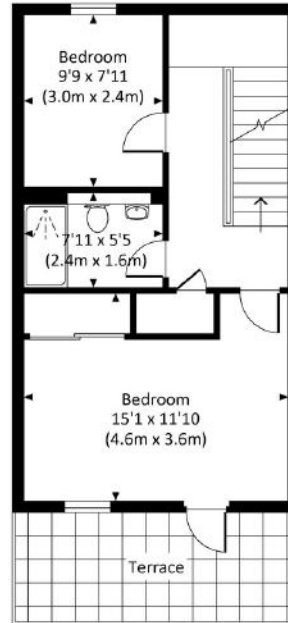
Bott's Mews is perfectly located for Westbourne Grove and it's first class array of restaurants, bars and boutiques.

BOTT'S MEWS, W2

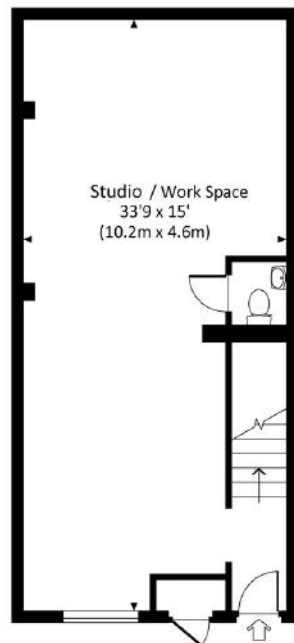
Approx. gross internal area
1704 Sq Ft. / 158.3 Sq M.



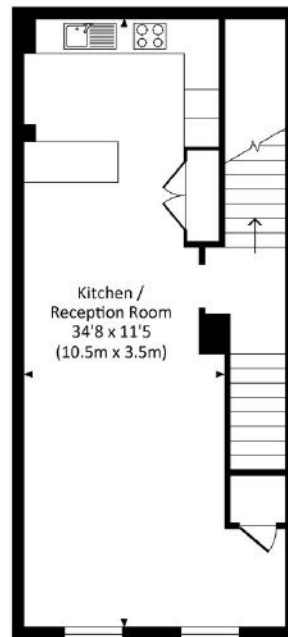
THIRD FLOOR



SECOND FLOOR



GROUND FLOOR



FIRST FLOOR

All measurements are approximate and for guidance and illustrative purposes only.
Photography and Floor Plans by www.rayco.london - +44 7793 974 209