

Boardwalk Place, E14

£585,000

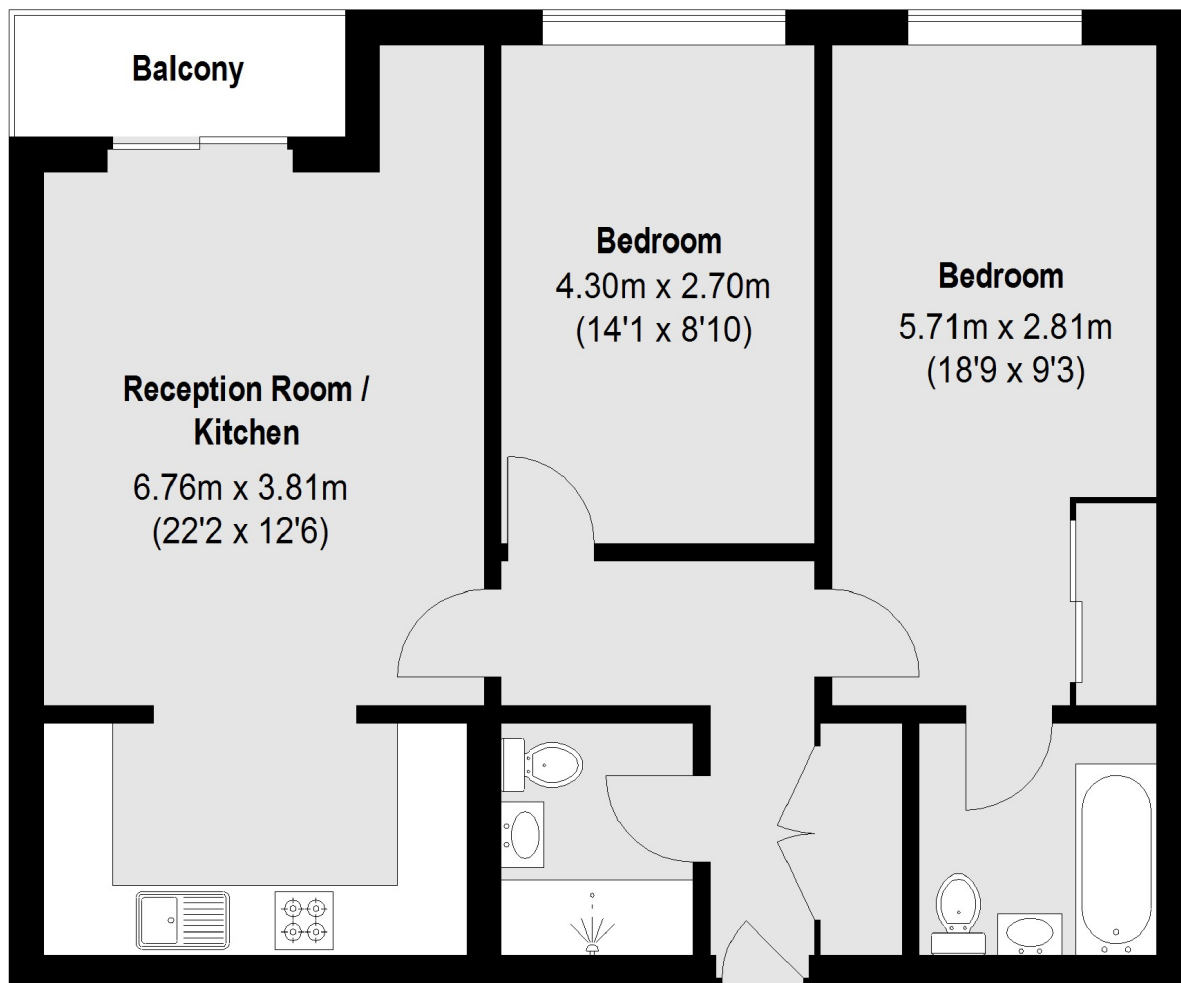
Offering 785 Sq.Ft of ample living space is this two bedroom home with views Canary Wharf and Dock views located in the sought after Boardwalk Place. Features to include private balcony, allocated parking, concierge service and 900+ year lease.

Boardwalk Place is set in one of the closest developments to Canary Wharf which offers a plethora of shops, bars, restaurants and transport links to include DLR, Tube Station and the Victoria Line.

Features

- 900+ Year Lease
- Allocated Parking
- Private Balcony
- Dock Views
- Concierge Service
- No Onward chain

Boardwalk Place, London, E14



Total area (approx.): 72.7sq. m (783 Sq. ft)
Balcony : 2.99 sq. m (32 Sq. ft)