



Boardwalk Place, E14

£404 Per week

A bright two bedroom apartment on the fourth floor of this dockside development. This spacious apartment has two bathrooms, a separate kitchen and a large balcony overlooking the marina.

Boardwalk Place is moments from the shops, bars and restaurants of Canary Wharf, including the popular Gun Restaurant.

Features

- Two Bedrooms
- Two Bathrooms
- Private Balcony
- Marina Views
- Allocated Parking
- Porter

Boardwalk Place,
London, E14

Boardwalk Place, E14

Approximate Gross Internal Area
786 sq ft / 73 sq m

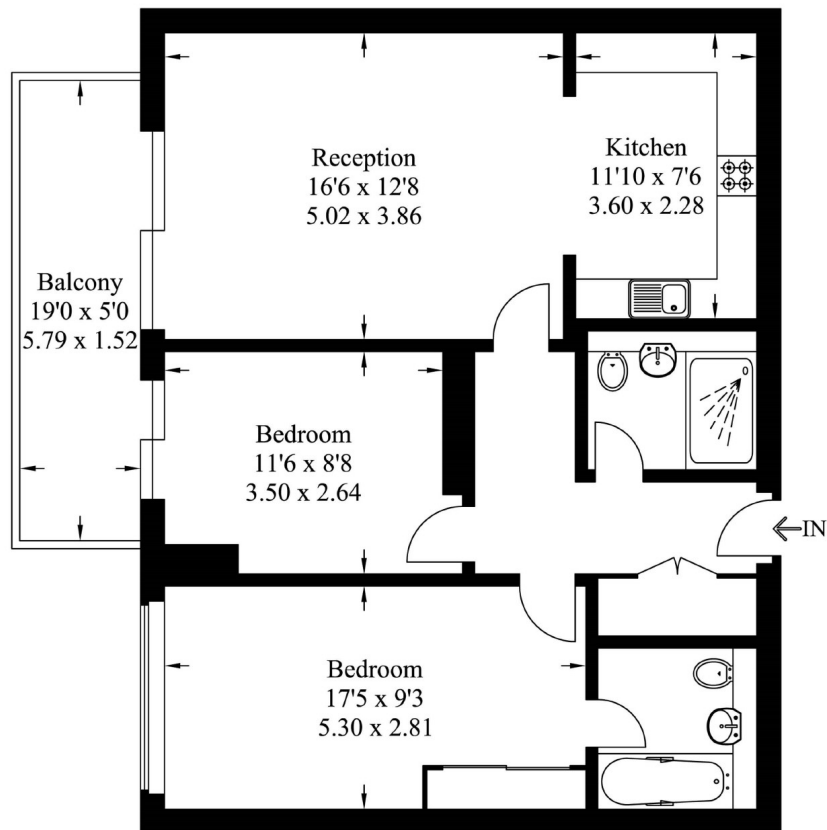


Illustration for identification purposes only,
measurements are approximate, not to scale.

Contact

To arrange a viewing call our office on
the number below or visit our website.



Energy Rating: . We aim to make our particulars both accurate and reliable. However they are not guaranteed; nor do they form part of an offer or contract. If you require clarification on any points then please contact us, especially if you're traveling some distance to view. Please note that appliances and heating systems have not been tested and therefore no warranties can be given as to their good working order.