

Cold Harbour, E14

£450 Per week

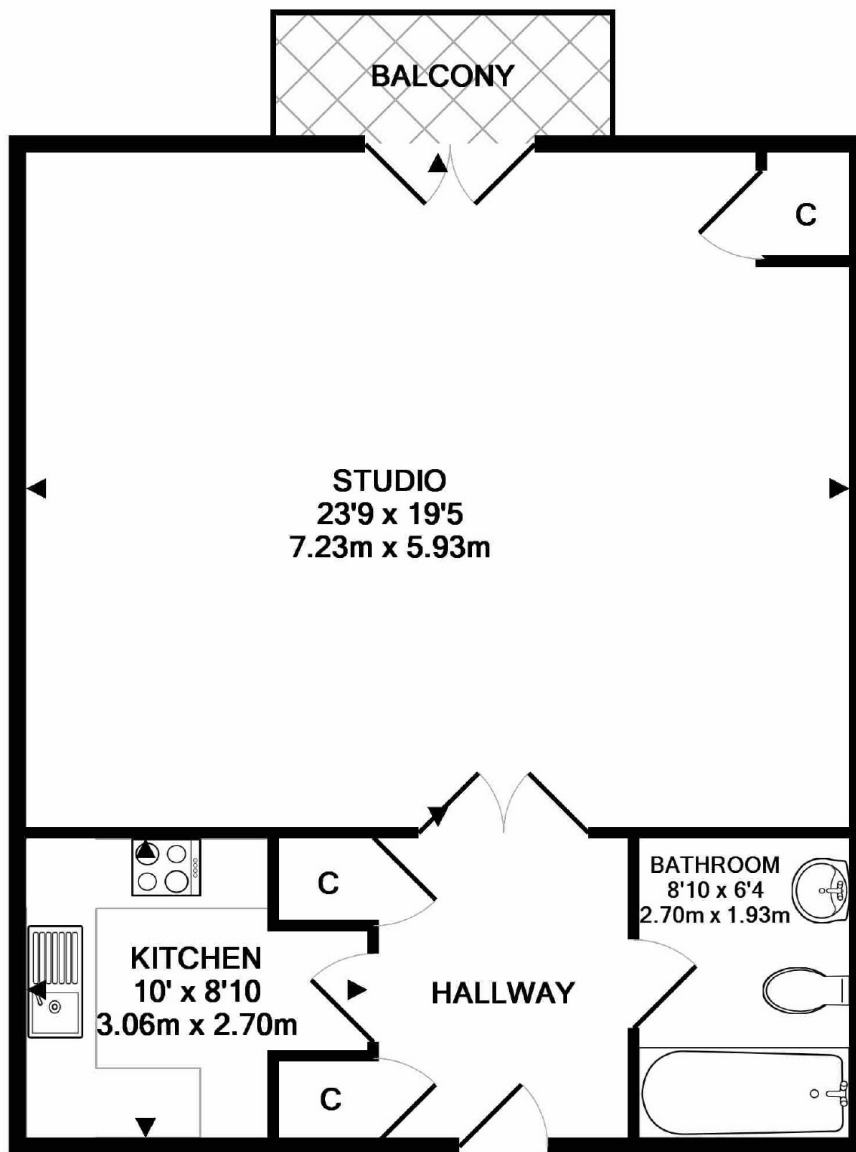
An exceptionally large apartment on the top floor of this secure development. The apartment benefits from incredible river views and has wooden flooring throughout, a separate kitchen, ample storage and a private balcony.

Cold Harbour is a charming cobbled street moments from the shops, bars and restaurants of Canary Wharf, including the popular Gun Pub.

Features

- Top Floor
- Studio Apartment
- River Facing
- Wooden Flooring
- Private Balcony
- Parking Separate Negotiation

Cold Harbour, London, E14



TOTAL APPROX. FLOOR AREA 672 SQ.FT. (62.4 SQ.M.)

Whilst every attempt has been made to ensure the accuracy of the floor plan contained here, measurements of doors, windows, rooms and any other items are approximate and no responsibility is taken for any error, omission, or mis-statement. This plan is for illustrative purposes only and should be used as such by any prospective purchaser. The services, systems and appliances shown have not been tested and no guarantee as to their operability or efficiency can be given

Made with Metropix ©2018