

Poplar High Street, E14 £550,000

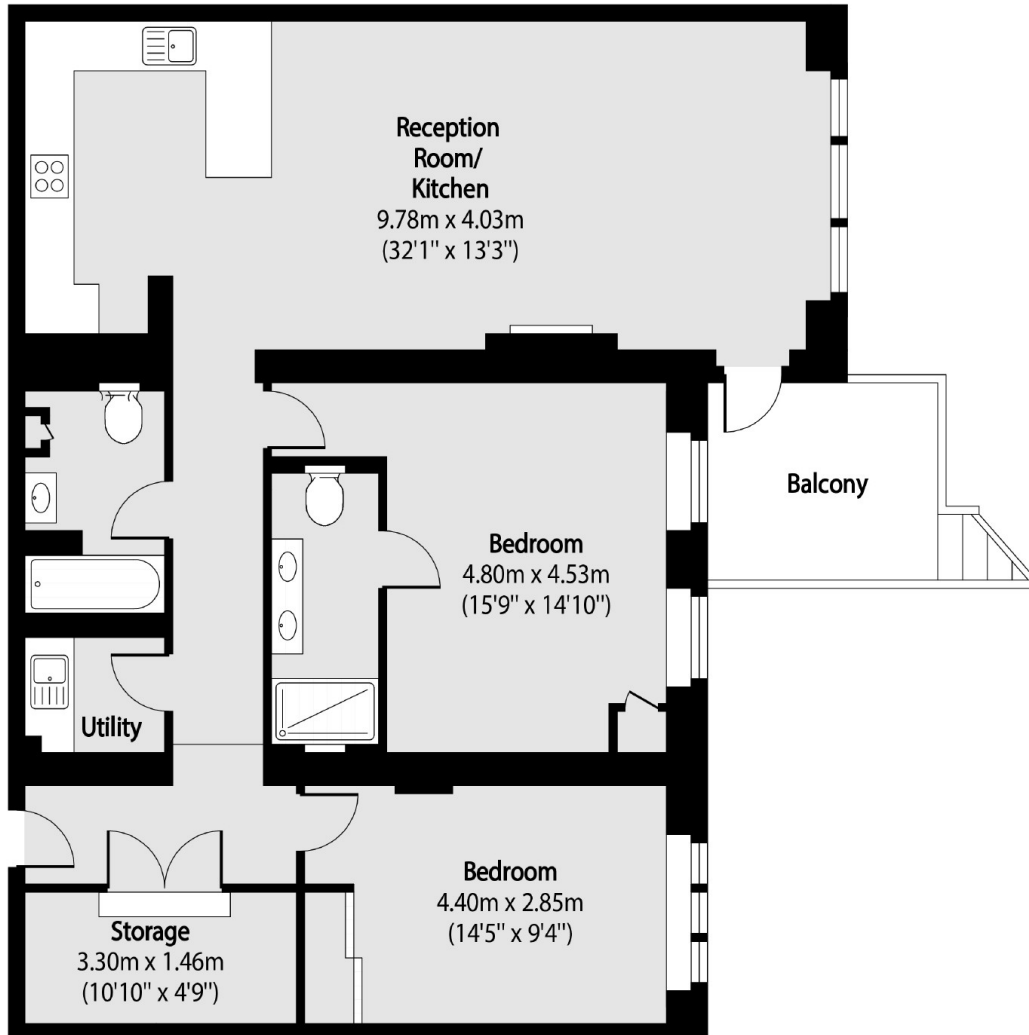
Rare to the market and presented in immaculate condition is this two bedroom home offering 1,108 Sq.Ft of ample living space. Features to include open plan reception room, private terrace leading to communal gardens, two bathrooms, utility room, allocated parking and a share of freehold.

Wickes House is located on Poplar High Street and is 0.2 miles from Blackwall DLR Station which provides good access to Canary Wharf and The City.

Features

Offers in excess of £550,000
1108 Sq.Ft
Two Bedroom
Private Terrace
Communal Garden
Share Of Freehold

Poplar High Street,
London, E14



Total area (approx): 102.98 sq m (1108 sq. ft)

Balcony total area (approx): 6.72 sq m (72 sq. ft)