

Westferry Road, E14

£395,000

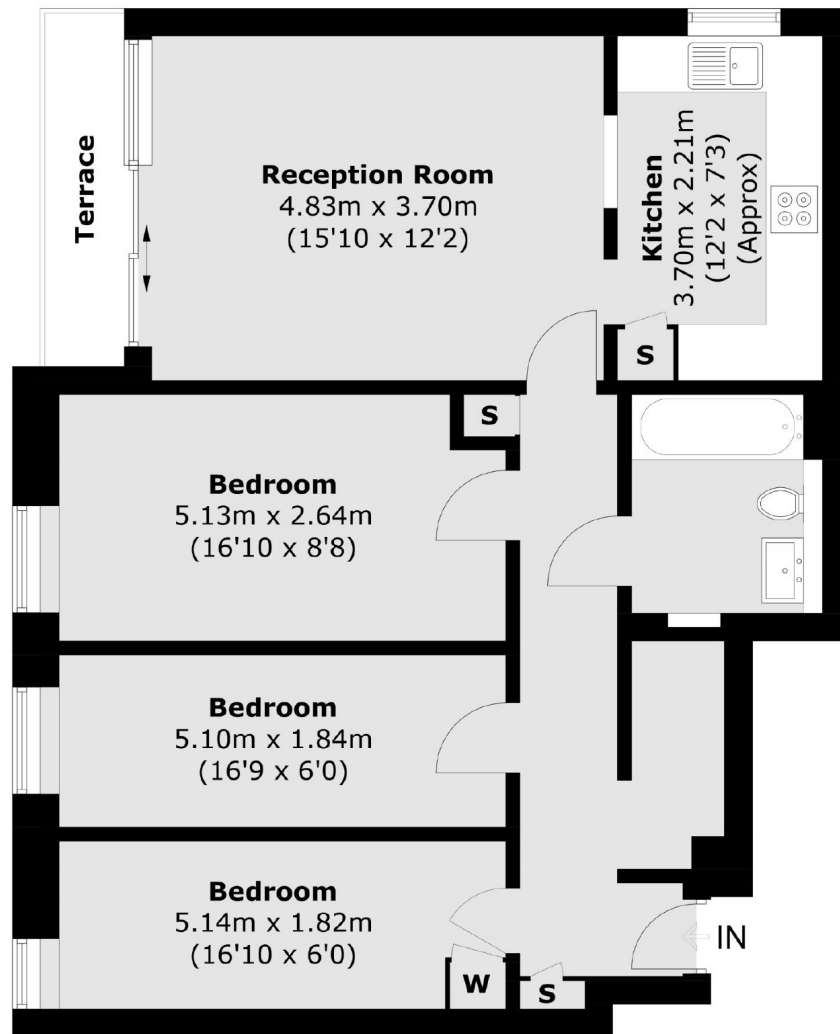
River views are enjoyed from the balcony from this 17th floor apartment located within E14. Features to include south facing balcony, three bedrooms, re-fitted kitchen and no onward chain.

Bowsprit Point is half a mile from Canary Wharf which offers residents a selection of bars, restaurants and transport links.

Features

- Cash Buyers Only
- 17th Floor
- Day Porter
- E14 Location
- Low Service Charge
- Low Ground Rent

Westferry Road, London, E14



Seventeenth Floor

Total area (approx.): 78.1 sq. m (840.6 sq. ft)
Balcony (approx.): 3.2 sq. m (34.4 sq. ft)

Contact

To arrange a viewing call our office on the number below or visit our website.



Energy Rating: D. We aim to make our particulars both accurate and reliable. However they are not guaranteed; nor do they form part of an offer or contract. If you require clarification on any points then please contact us, especially if you're traveling some distance to view. Please note that appliances and heating systems have not been tested and therefore no warranties can be given as to their good working order.