



Maritime Quay, E14

£500,000

A two double bedroom river fronted home located in a gated development within Maritime Quay. Features to include private balcony with river views, two bathrooms, secure allocated parking and no onward chain.

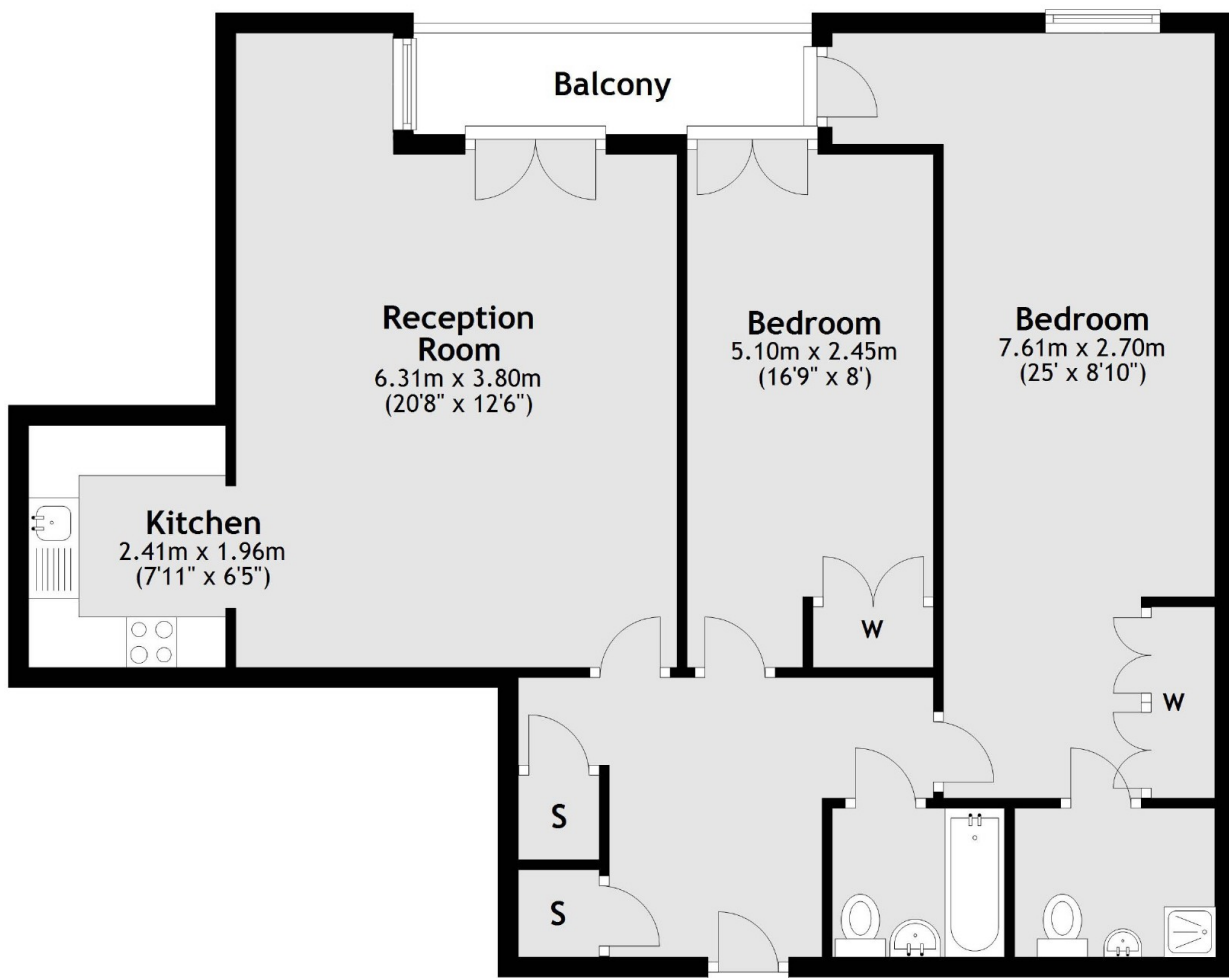
Shackleton Court is just over half a mile to Canary Wharf which offers a selection bars, restaurants and DLR Stations and the Jubilee line.

Features

Offers in excess of £500,000
River Fronted Development
Private Balcony
EWS1 Form
Secure Allocated Parking
No Onward Chain

Maritime Quay, London, E14

First Floor



Total area: approx. 81.1 sq. metres (872.8 sq. feet)

Contact

To arrange a viewing call our office on the number below or visit our website.



Energy Rating: B. We aim to make our particulars both accurate and reliable. However they are not guaranteed; nor do they form part of an offer or contract. If you require clarification on any points then please contact us, especially if you're traveling some distance to view. Please note that appliances and heating systems have not been tested and therefore no warranties can be given as to their good working order.