



Fairmont Avenue, E14

£650,000

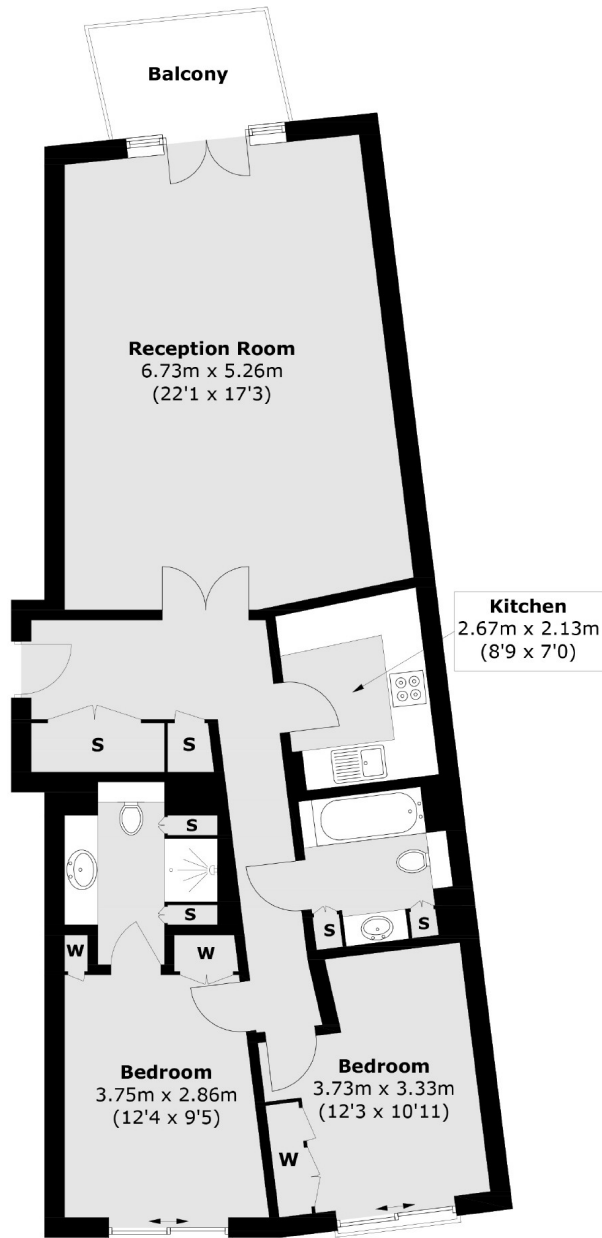
Two Double bedroom riverside apartment. The flat has a separate kitchen, valet parking and a balcony with views over the River Thames and private New Providence Wharf gardens.

New Providence Wharf has great transport links being under three quarters of a mile walk from Canary Wharf and there are three DLR stations within a third of a mile away.

Features

Two Double Bedrooms
Two Bathrooms
River Views
Private Parking
Gym and Pool
24 Hour Concierge

Fairmont Avenue, London, E14



Total area (approx.): 89 sq. m (957.9 sq. ft)
Balcony area: 4.5 sq. m (48.4 sq. ft)

Contact

To arrange a viewing call our office on the number below or visit our website.



Energy Rating: B. We aim to make our particulars both accurate and reliable. However they are not guaranteed; nor do they form part of an offer or contract. If you require clarification on any points then please contact us, especially if you're traveling some distance to view. Please note that appliances and heating systems have not been tested and therefore no warranties can be given as to their good working order.