



Baltimore Wharf, E14

£595 Per week

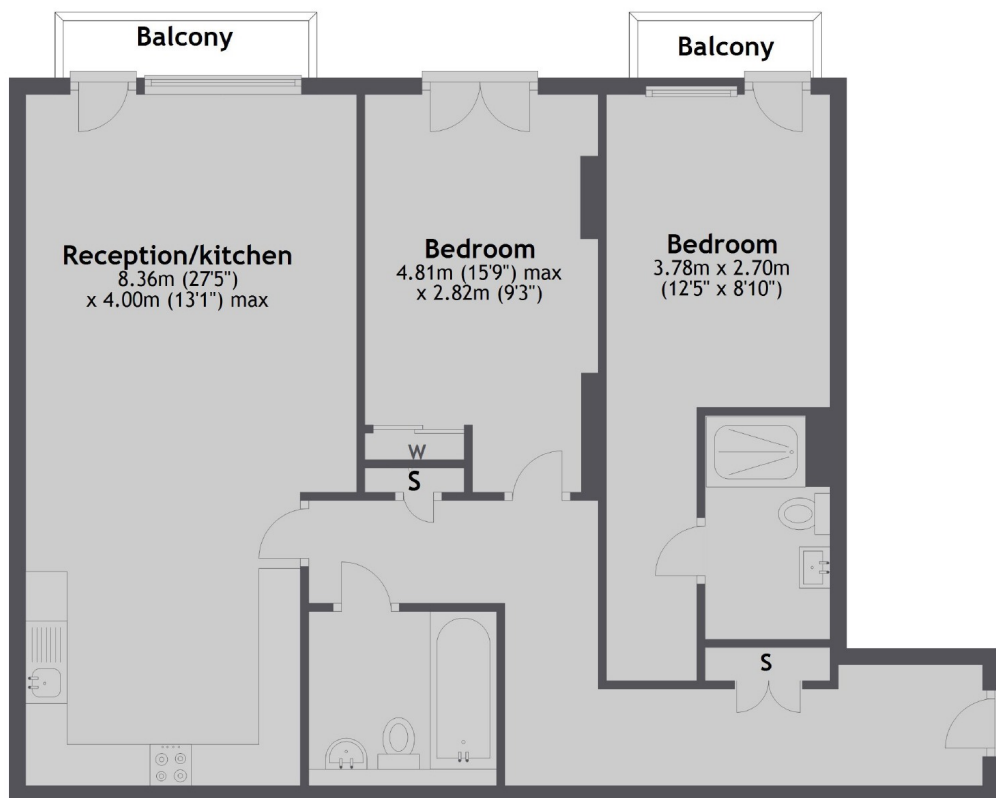
An exceptionally large two bedroom apartment on the seventh floor of this sought after development. This modern apartment has an open plan reception room, two balconies and direct dock views.

Baltimore Wharf is moments away from the bars and restaurants of South Quay, including the popular Lotus Floating Restaurant.

Features

- Two Bedrooms
- Two Bathrooms
- Seventh Floor
- Dock Facing
- Balcony
- Residents Gym

Baltimore Wharf, London, E14



Total area: approx. 83.9 sq. metres (903.5 sq. feet)

Contact

To arrange a viewing call our office on the number below or visit our website.



Energy Rating: B. We aim to make our particulars both accurate and reliable. However they are not guaranteed; nor do they form part of an offer or contract. If you require clarification on any points then please contact us, especially if you're traveling some distance to view. Please note that appliances and heating systems have not been tested and therefore no warranties can be given as to their good working order.