



Lincoln Plaza, E14

£600,000

A bright two bedroom apartment on the second floor of this sought after and prestigious development. The property has wooden flooring, an open plan reception room, air conditioning and fibre optic broadband and access to the communal roof garden. Service charge is £3549 and ground

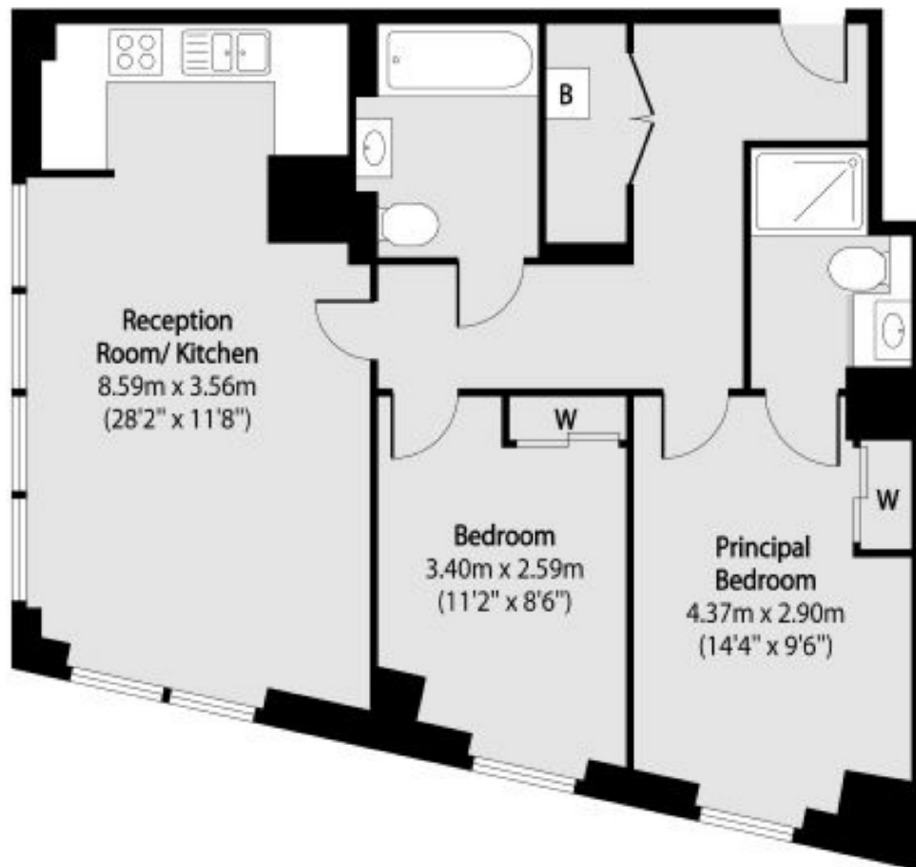
Talisman Tower is in the heart of South Quay, moments from Millharbour Dock and a selection of shops, bars and restaurants in Canary Wharf.

Features

EWS1 Certificate Received
OIEO £600,000
Two Bedrooms
984 Year Lease
Gym and Swimming Pool
24 Hour Concierge

Lincoln Plaza, London, E14

Second Floor



Total area (approx): 68.28 sq m (735 sq. ft)

Contact

To arrange a viewing call our office on the number below or visit our website.



Energy Rating: B. We aim to make our particulars both accurate and reliable. However they are not guaranteed; nor do they form part of an offer or contract. If you require clarification on any points then please contact us, especially if you're traveling some distance to view. Please note that appliances and heating systems have not been tested and therefore no warranties can be given as to their good working order.