



## Amsterdam Road, E14

### £500,000

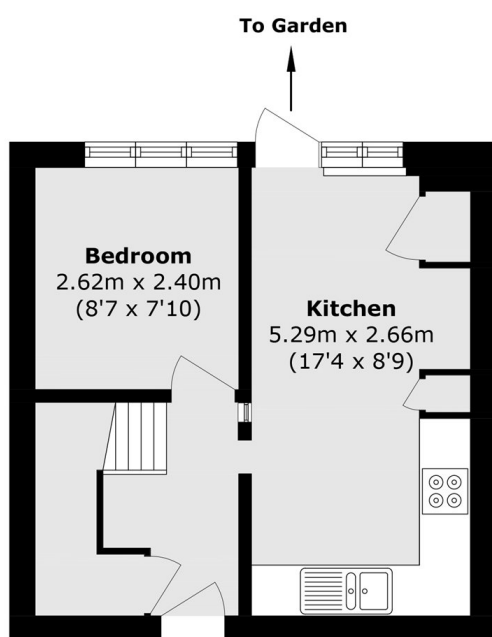
Rare to the market is this charming two bedroom split level home on Amsterdam Road. The property features it's own private entrance, allocated parking, and a larger than average south facing garden.

Amsterdam Road sits nicely alongside the River Thames. Crossharbour DLR station is just 0.5 miles away which offers excellent transport around the City.

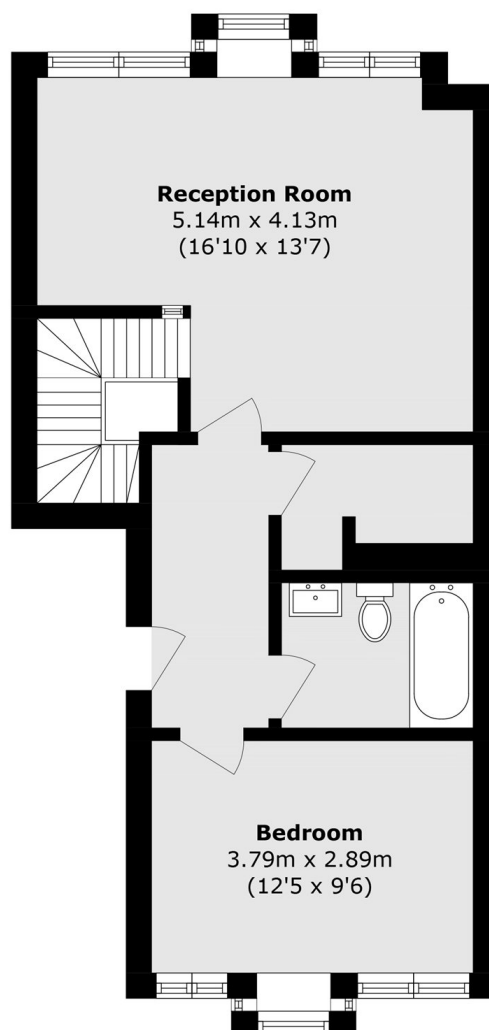
### Features

- Large South Facing Garden
- Private Entrance
- Allocated Parking
- Split Level
- Two Double Bedrooms
- Immaculate Throughout

# Amsterdam Road, London, E14



**First Floor**



**Second Floor**

Total area (approx.): 74.4 sq. m (800.8 sq. ft)