

## Barking Road, E16

### £650,000

Arranged over 1,124 sq.ft is his light and airy three double bedroom flat is in stunning condition. The property is split over two floors, has a private terrace and offered on a chain free basis.

Located just a short distance from Canning Town station for the Jubilee line, this property offers an easy commute to Canary Wharf and London Bridge with a selection of amenities nearby.

### Features

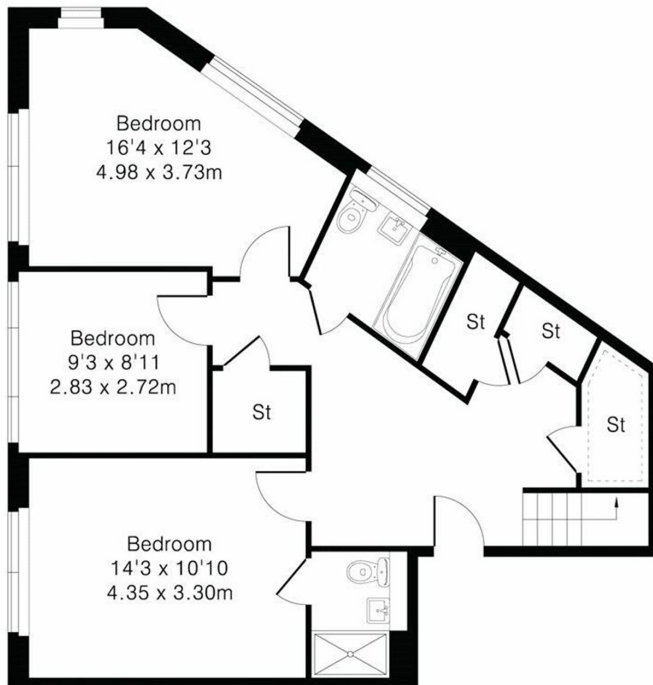
- Three Double Bedroom
- Two Bathrooms
- Private Balcony
- Modern Appliances
- Contemporary Design
- Great Transport Links

# Barking Road, London, E16

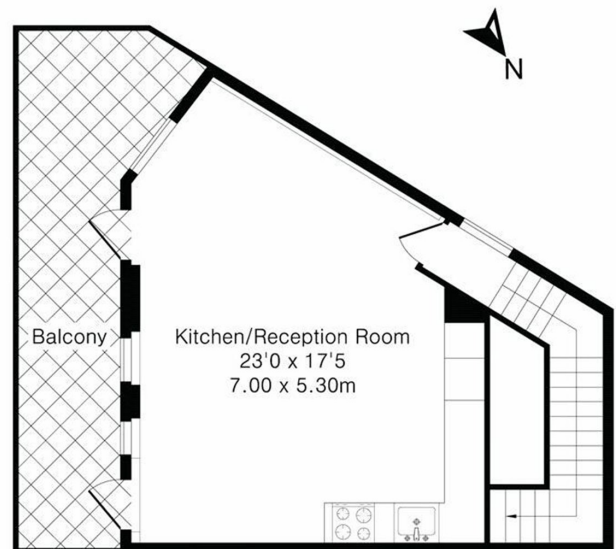
Approximate Gross Internal Area 1124 sq ft – 104 sq m

Third Floor Area 714 sq ft – 66 sq m

Fourth Floor Area 410 sq ft – 38 sq m



Third Floor



Fourth Floor