



Mastmaker Road, E14

£530,000

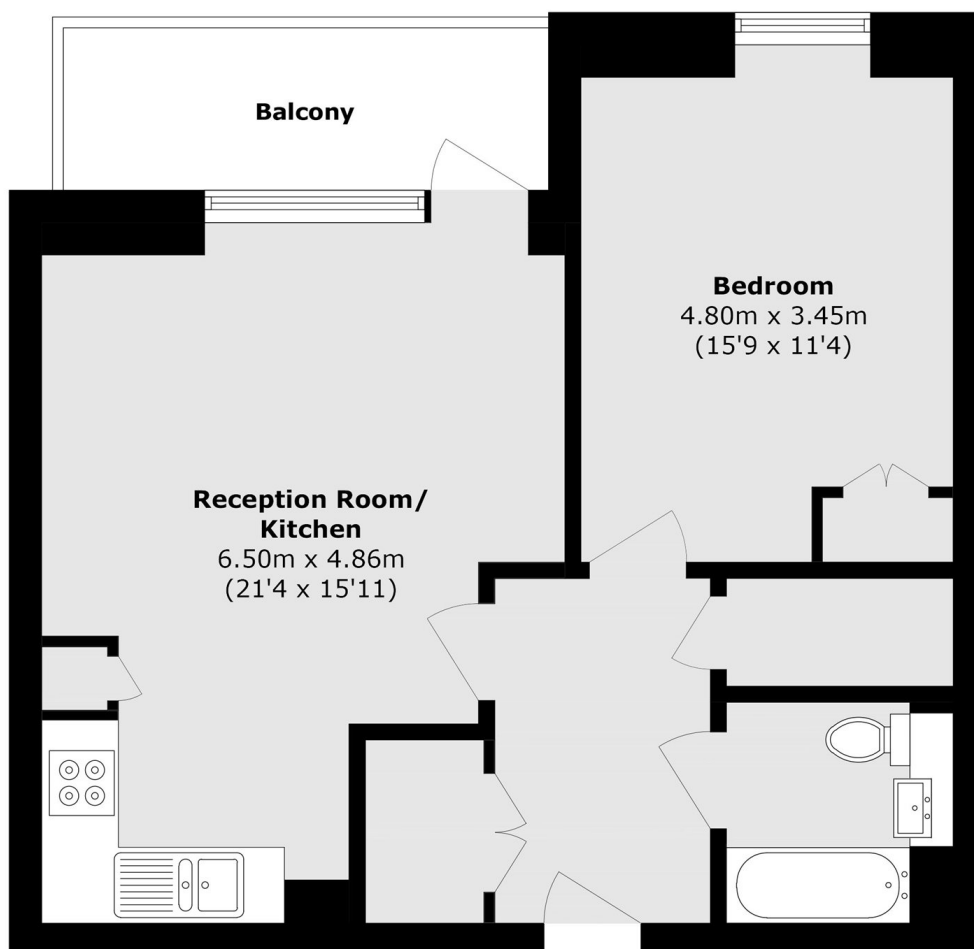
We are delighted to offer this one-bedroom home to the market within the sought-after Salvor Tower development. The property features a private balcony with river views, floor-to-ceiling windows, and is ideally located just moments from Canary Wharf.

South Quay DLR station is just 0.1 miles from Salvor Tower, with Canary Wharf also within a short walking distance, offering excellent transport links and a wealth of local amenities.

Features

West Facing Balcony
Views Of The River
Modern Throughout
Full Height Windows
Short walk From Canary Wharf
Sought After Development

Mastmaker Road, London, E14



Total area (approx.): 60.6 sq. m (652.2 sq. ft)

Balcony area (approx.): 6.7 sq. m (72.1 sq. ft)