



Botanic Square, E14

£611 Per week

A bright two bedroom apartment set on a lower floor of this dockside development. This modern apartment comes furnished, with ample storage, a large balcony and courtyard views. Parking is also available by negotiation.

London City Island is moments from the shops, bars and restaurants of Canning Town. On-site facilities include a twenty four hour concierge, residents gyms, swimming pools and treatment rooms.

Features

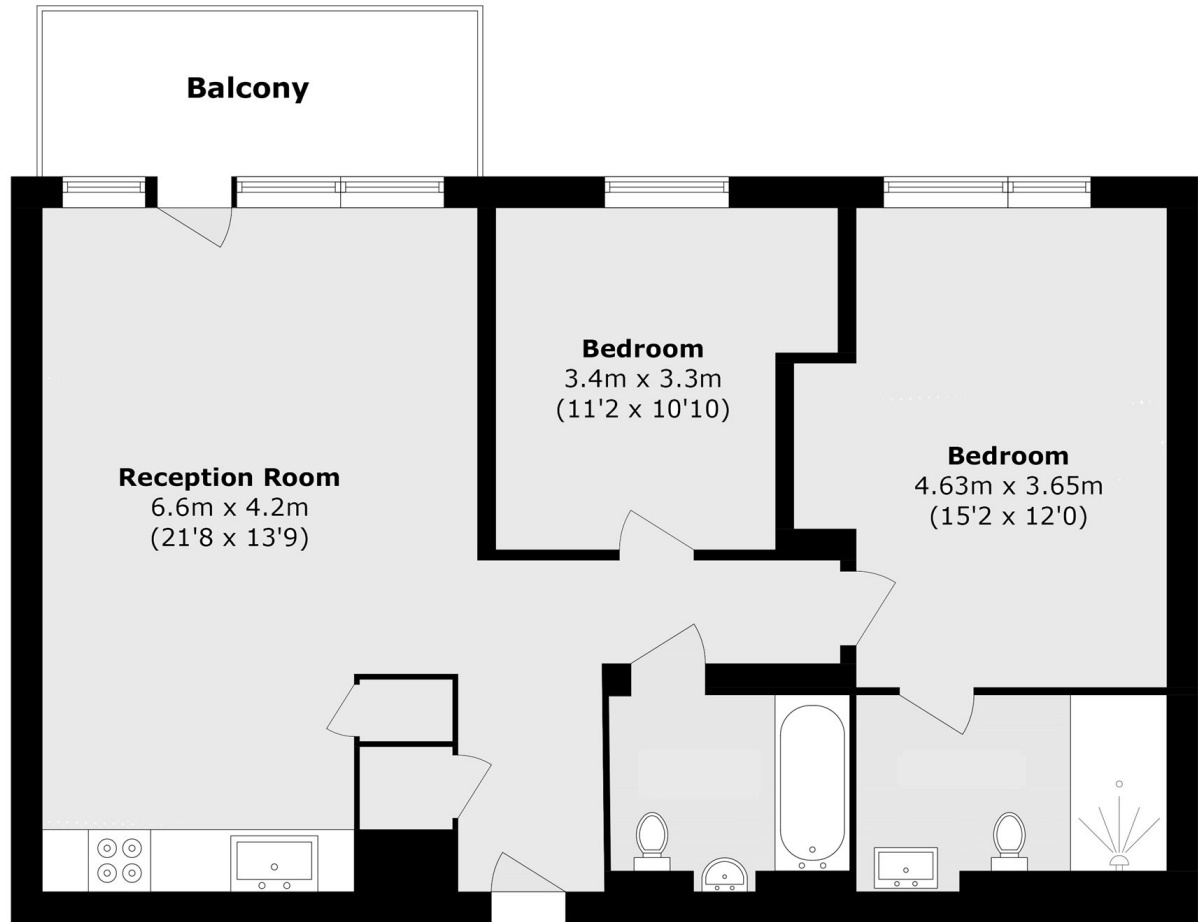
- Lower Floor Listing
- Two Double Bedrooms
- Courtyard Aspect
- Private Balcony
- Residents Gym, Pool & Spa
- 24-Hour Concierge



Botanic Square, E14



Botanic Square, London, E14



Total area (approx.): 71.6 sq. m (770.7 sq. ft)
Balcony area (approx.): 6.7 sq. m (72.1 sq. ft)