



Park Drive, E14

£807 Per week

A well-presented one bedroom apartment situated on a mid-floor of One Park Drive. This desirable home has an open plan reception room, floor to ceiling windows and a private balcony with waterside views.

One Park Drive is a landmark residence in central Canary Wharf and is set moments from the shops, bars and restaurants of Wood Wharf. Residents can enjoy the luxurious on-site facilities, which include an indoor pool, sauna, steam room, high-tech gymnasium, cinema, residents' lounge and 24-hour concierge.

Features

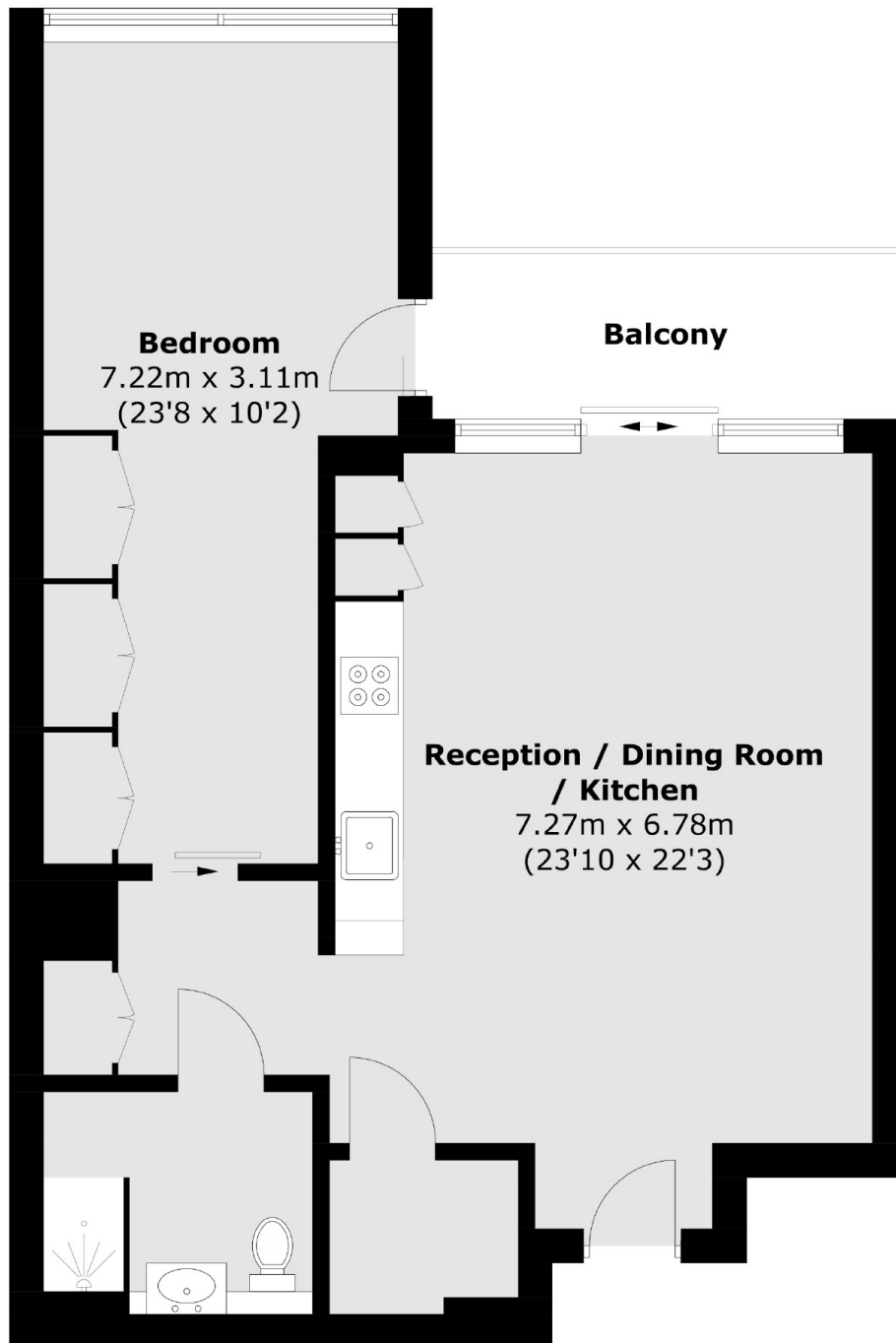
- One Bedroom
- Mid-Floor Position
- Wooden Flooring
- Private Balcony
- On-Site Facilities
- Furnished



Park Drive, E14



Park Drive, London, E14



Total area (approx.): 62.9 sq. m (677.0 sq. ft)
Balcony area (approx.): 5.9 sq. m (63.5 sq. ft)

Dexters

Canary Wharf East
39 Westferry Road
London
E14 8JH
Lettings
020 7590 9550

Energy Rating: B. We aim to make our particulars both accurate and reliable. However they are not guaranteed; nor do they form part of an offer or contract. If you require clarification on any points then please contact us, especially if you're traveling some distance to view. Please note that appliances and heating systems have not been tested and therefore no warranties can be given as to their good working order.

 **RICS** | Regulated
Estate Agent
and Letting Agent

[dexters.co.uk](https://www.dexters.co.uk)