



## Park Drive, E14

£1,384 Per week

An impressive two bedroom apartment situated within the most desirable development in Canary Wharf. Located on one of the highest floors, with unrivalled views, and over 1,100sqft of internal floorspace.

Residents of One Park Drive enjoy roaming private security in Wood Wharf, in addition to having access to luxurious on-site facilities, which include: a 24/7 concierge, lounge & library, cinema, swimming pool, gymnasium and spa.

### Features

- High Floor Residence
- Over 1,000sqft
- Luxurious Fittings
- Private Balcony
- On-Site Facilities
- Floor-To-Ceiling Windows



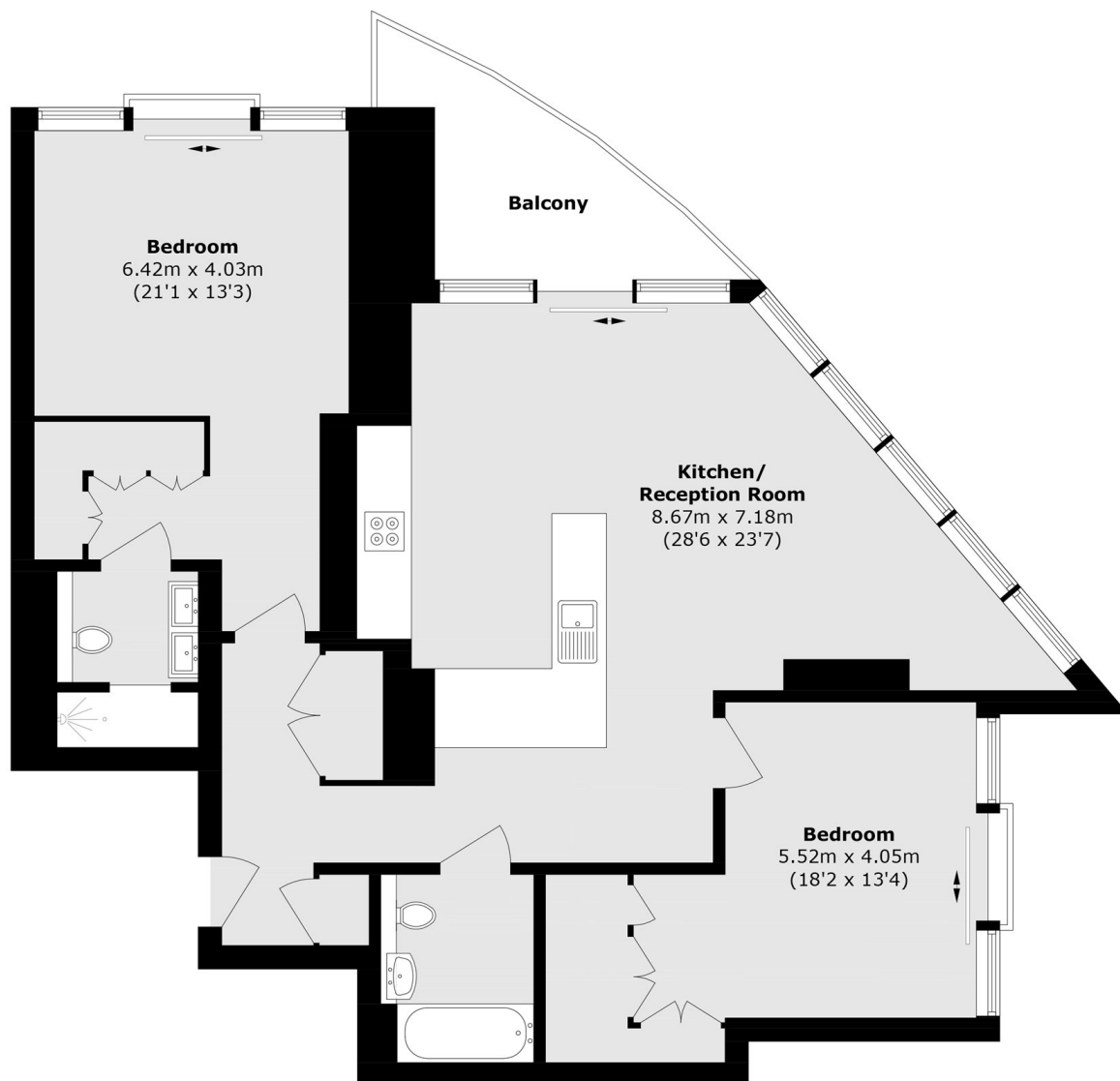


**Park Drive, E14**





# Park Drive, London, E14



Total area (approx.): 107.7 sq. m (1,159.3 sq. ft)

Balcony (approx.): 7.5 sq. m (80.7 sq. ft)

## Dexters

Canary Wharf East  
39 Westferry Road  
London  
E14 8JH  
Lettings  
020 7590 9550

Energy Rating: B. We aim to make our particulars both accurate and reliable. However they are not guaranteed; nor do they form part of an offer or contract. If you require clarification on any points then please contact us, especially if you're traveling some distance to view. Please note that appliances and heating systems have not been tested and therefore no warranties can be given as to their good working order.

 **RICS** | Regulated  
Estate Agent  
and Letting Agent

[dexters.co.uk](https://www.dexters.co.uk)