



## Thomas Road, E14

### £365,000

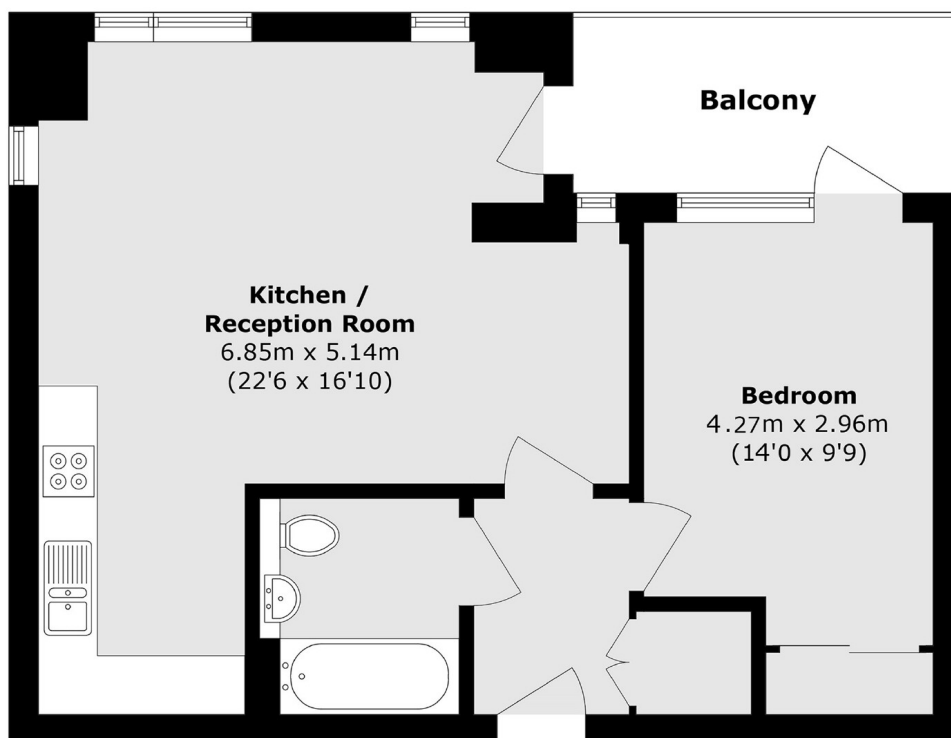
A rarely available one-bedroom home located on Thomas Road, offering an open-plan reception and kitchen, a private balcony, and stylish modern interiors throughout.

Ideally located just 0.6 miles from Thomas Road, Limehouse DLR Station offers excellent connections across the City and beyond.

### Features

- Modern One Bedroom Home
- Private Balcony
- Open Plan Reception
- Long Lease
- Great Location
- Concierge Services

# Thomas Road, London, E14



Total area (approx.): 54.0 sq. m (581.3 sq. ft)

Balcony area (approx.): 7.7 sq. m (82.9 sq. ft)