



**Arnhem Place, E14**  
£1,150,000

**Dexters**



## Arnhem Place, E14

A rarely available, recently refurbished and redecorated riverfront duplex penthouse apartment, offering attractive views over the River Thames. This exceptional property features a private 180-degree roof terrace, an additional terrace off the lounge/dining area, three double bedrooms with fitted wardrobes, three bath/shower rooms, two allocated parking spaces, and a 24-hour concierge.

On the lower level, the generous entrance hall leads to a re-fitted kitchen, a double bedroom, a re-fitted shower room, and a spacious sitting room opening onto the terrace with river views.

Upstairs, there are two large double bedrooms, each with its own en-suite. A spiral staircase leads to the expansive rooftop terrace offering panoramic views across the Thames and London skyline.

New Atlas Wharf is currently undergoing scheduled external improvement works, carried out in line with the latest building standards and at no cost to flat owners. These enhancements form part of a broader initiative aimed at improving the building's long-term quality, visual appeal, and overall value.

South Quay DLR is just 0.6 miles away, and Canary Wharf with its wealth of shops, restaurants, and fast transport links via the Elizabeth Line, Jubilee Line, and DLR is a short walk or quick bus ride away.

### Features

River Facing

Residents Facilities

Two Allocated Parking

Chain Free

180 Degree Roof Terrace

Three Double Bedrooms



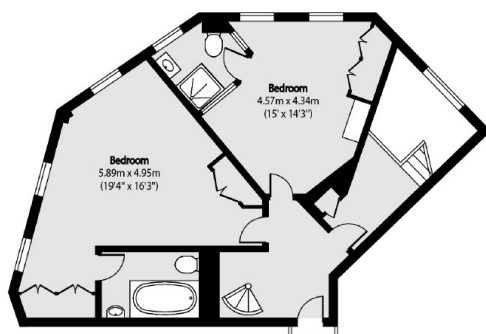




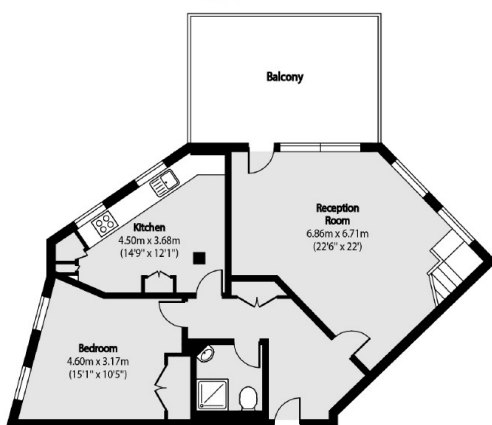




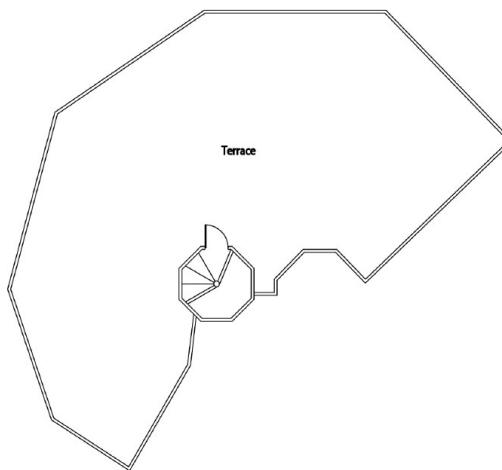
# Arnhem Place, London, E14



Tenth Floor



Ninth Floor



Eleventh Floor

Total area (approx): 128.11 sq m (1379 sq. ft)

Terrace total area (approx): 102.38 sq m (1102 sq. ft)

Balcony total area (approx): 16.62sq m (179 sq. ft)

## Dexters

Canary Wharf  
39 Westferry Road  
London  
E14 8JH

Sales  
020 7517 1199

Energy Rating: . We aim to make our particulars both accurate and reliable. However they are not guaranteed; nor do they form part of an offer or contract. If you require clarification on any points then please contact us, especially if you're traveling some distance to view. Please note that appliances and heating systems have not been tested and therefore no warranties can be given as to their good working order.



dexters.co.uk