



Lyell Street, E14

£575,000

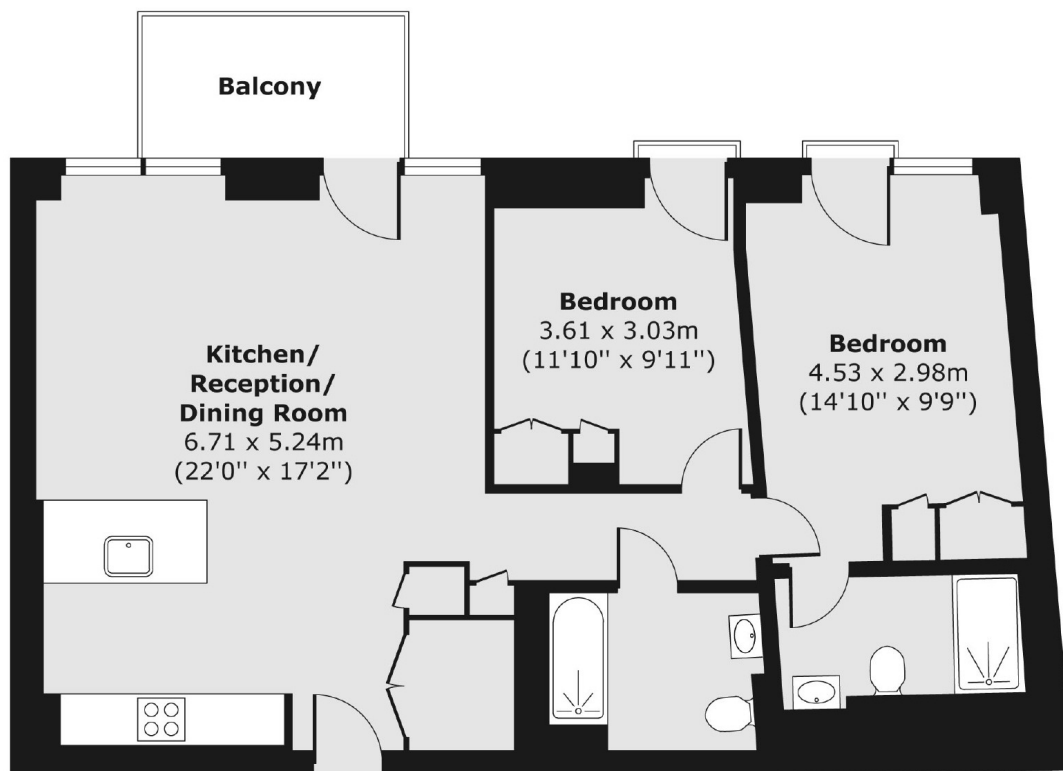
Located within the highly sought-after London City Island development, this bright and spacious two-bedroom apartment offers modern living in a vibrant riverside setting. The property benefits from two bathrooms, a private outdoor space, access to exclusive resident facilities, and is offered chain-free.

Canning Town Station is just 0.2 miles from London City Island, providing excellent transport links across the City and beyond.

Features

- Sought After Development
- Private Balcony
- Concierge Service
- Residents Facilities
- Chain Free
- Two Bedrooms

Lyell Street, London, E14



Total area (approx.) 73.36 sq. m (790 sq. ft)
Balcony area (approx.) 5.08 sq. m (55 sq. ft)