

Annabel Close, E14

£325,000

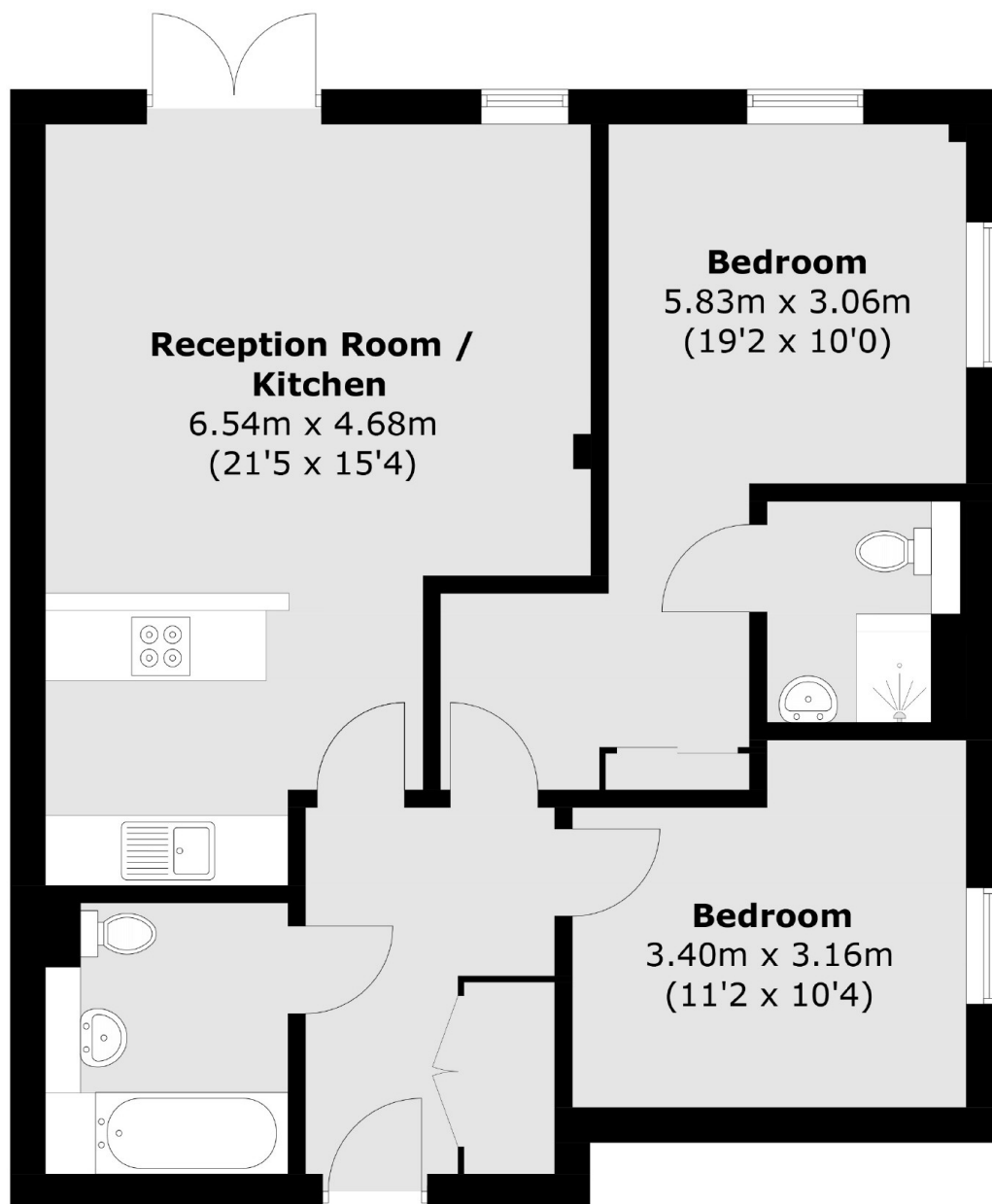
A two bedroom, two bathroom home offering 750 Sq.Ft of ample living space located moments from Canary Wharf. Features to include 200 plus year lease, open plan reception room, access to outside court yard and no onward chain.

Shepherd Court is conveniently located within walking distance of Chrisp Street Market, while the vibrant shops, bars, and restaurants of Canary Wharf are also close at hand.

Features

- 200 Plus Year Lease
- Two Double Bedrooms
- Two Bathrooms
- Wooden Flooring Throughout
- Open Plan Reception
- Chain Free

Annabel Close, London, E14



Total area (approx.): 69.6 sq. m (749.2 sq. ft)