



## Homer Drive, E14

### £500,000

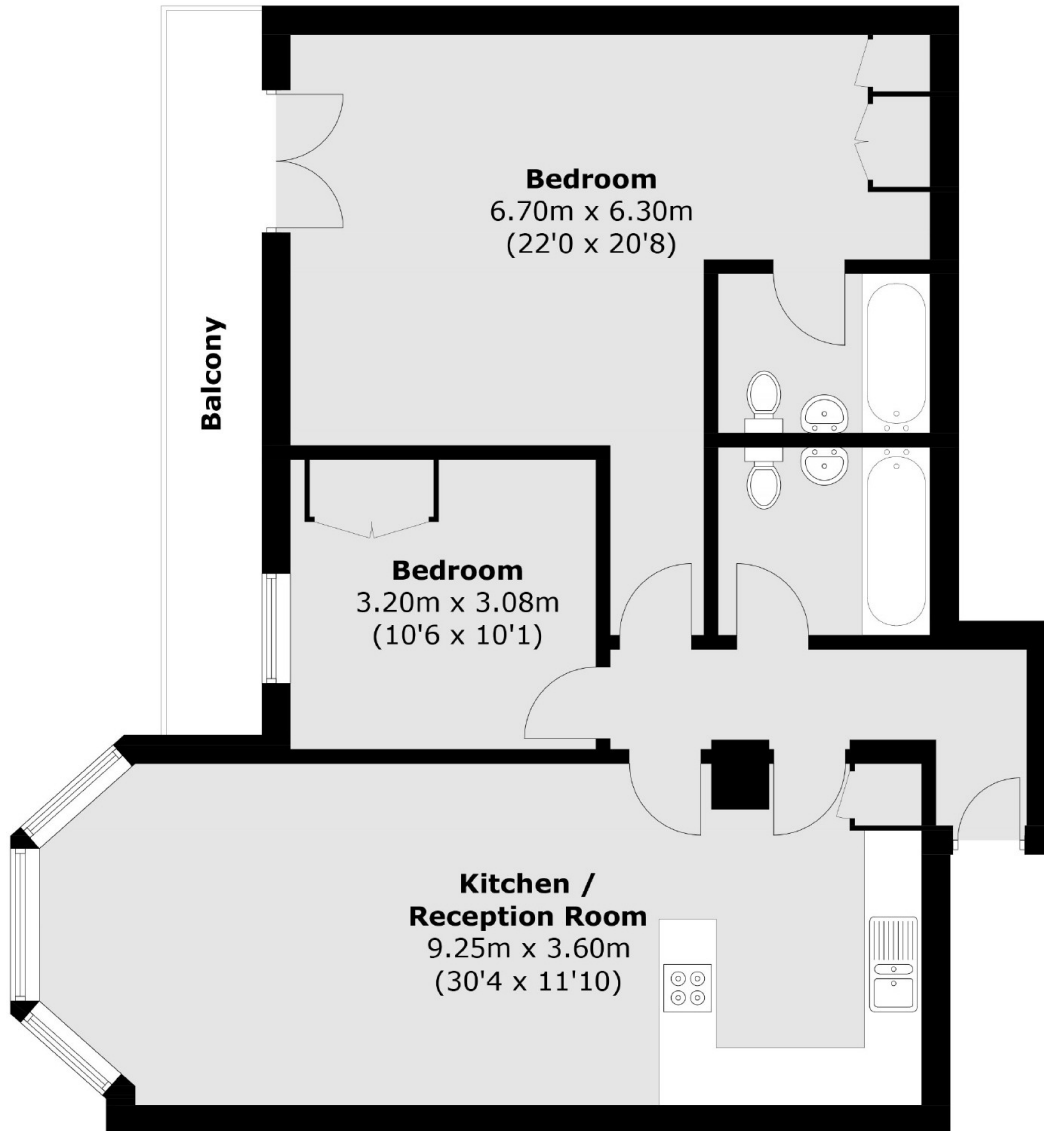
Welcome to this spacious two-bedroom, two-bathroom home, located in the highly sought-after Cyclops Wharf development. This well-presented property benefits from a private balcony, concierge service, and exclusive residents' facilities. Offered chain-free, it presents an excellent opportunity for both homeowners and investors alike.

Cyclops Wharf is conveniently located just 0.4 miles from Mudchute DLR station, providing excellent transport links across the City.

### Features

- 920 Square Feet
- Chain Free
- Concierge
- Resident Facilities
- Two Double Bedrooms
- Private Balcony

# Homer Drive, London, E14



Total area (approx.): 85.5 sq. m (920.3 sq. ft)  
Balcony: 7.6 sq. m (81.8 sq. ft)

## Dexters

Canary Wharf  
39 Westferry Road  
London  
E14 8JH  
Sales  
020 7517 1199

Energy Rating: . We aim to make our particulars both accurate and reliable. However they are not guaranteed; nor do they form part of an offer or contract. If you require clarification on any points then please contact us, especially if you're traveling some distance to view. Please note that appliances and heating systems have not been tested and therefore no warranties can be given as to their good working order.

 **RICS** | Regulated  
Estate Agent  
and Letting Agent

dexters.co.uk