



## Fairmont Avenue, E14

£461 Per week

A bright facing one bedroom apartment on the eleventh floor of this sought after development. The property has a separate kitchen, a private balcony and residents leisure facilities.

New Providence Wharf is moments from the shops, bars and restaurants of Canary Wharf, including easy access into the City via Blackwall DLR service, which is within a brief walk.

### Features

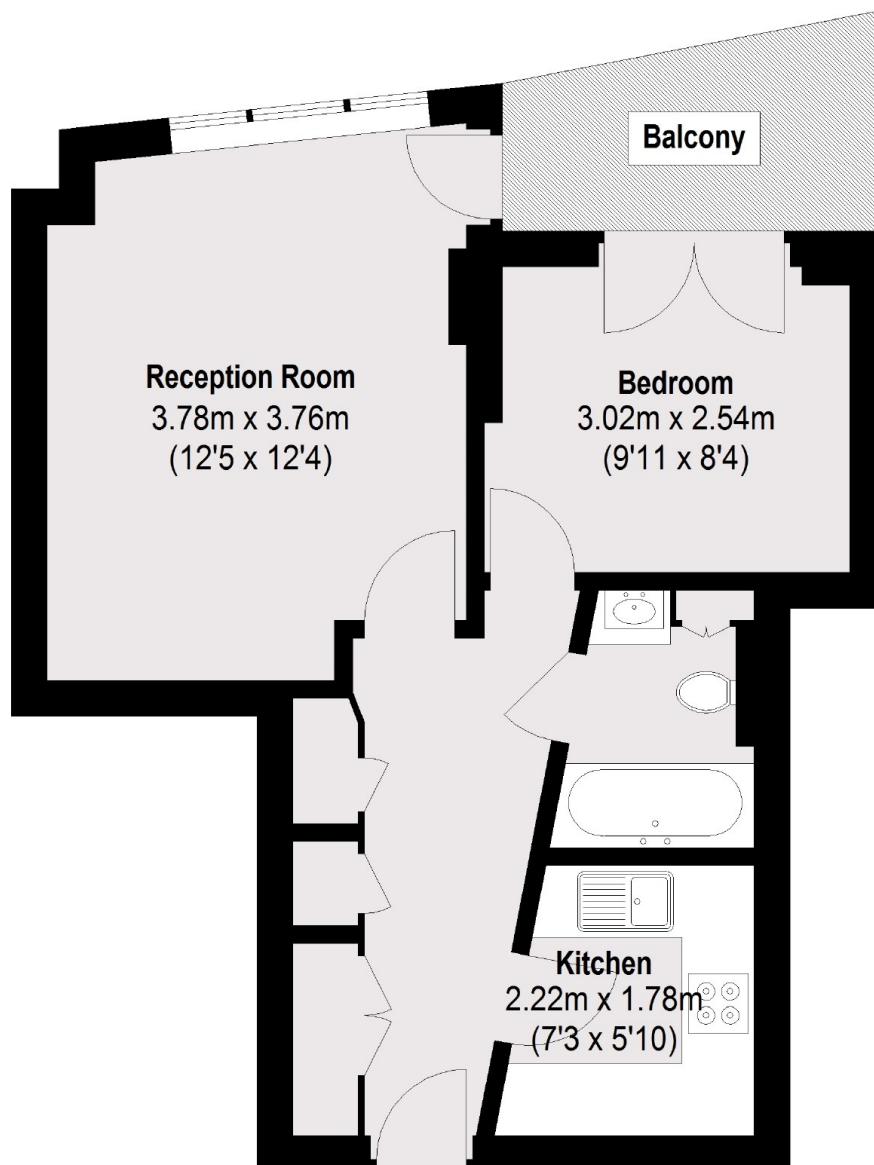
- High Floor
- Well-Presented
- River Views
- Balcony
- 24 Hour Concierge
- Residents Gym and Spa



Fairmont Avenue, E14



Fairmont Avenue,  
London, E14



## Eleventh Floor

Total area (approx.): 41.03 sq. m (442 sq. ft)  
Balcony: 4.93 sq. m (53 sq. ft)