



Fairmont Avenue, E14

£461 Per week

A bright apartment set within a popular riverside development in Canary Wharf. The property offers a separate integrated kitchen, a good-sized double bedroom and a large reception room with private balcony overlooking the River Thames.

New Providence Wharf is moments from the shops, bars and restaurants of Canary Wharf, in addition to being within a brief walk of Blackwall DLR, for regular access into the city.

Features

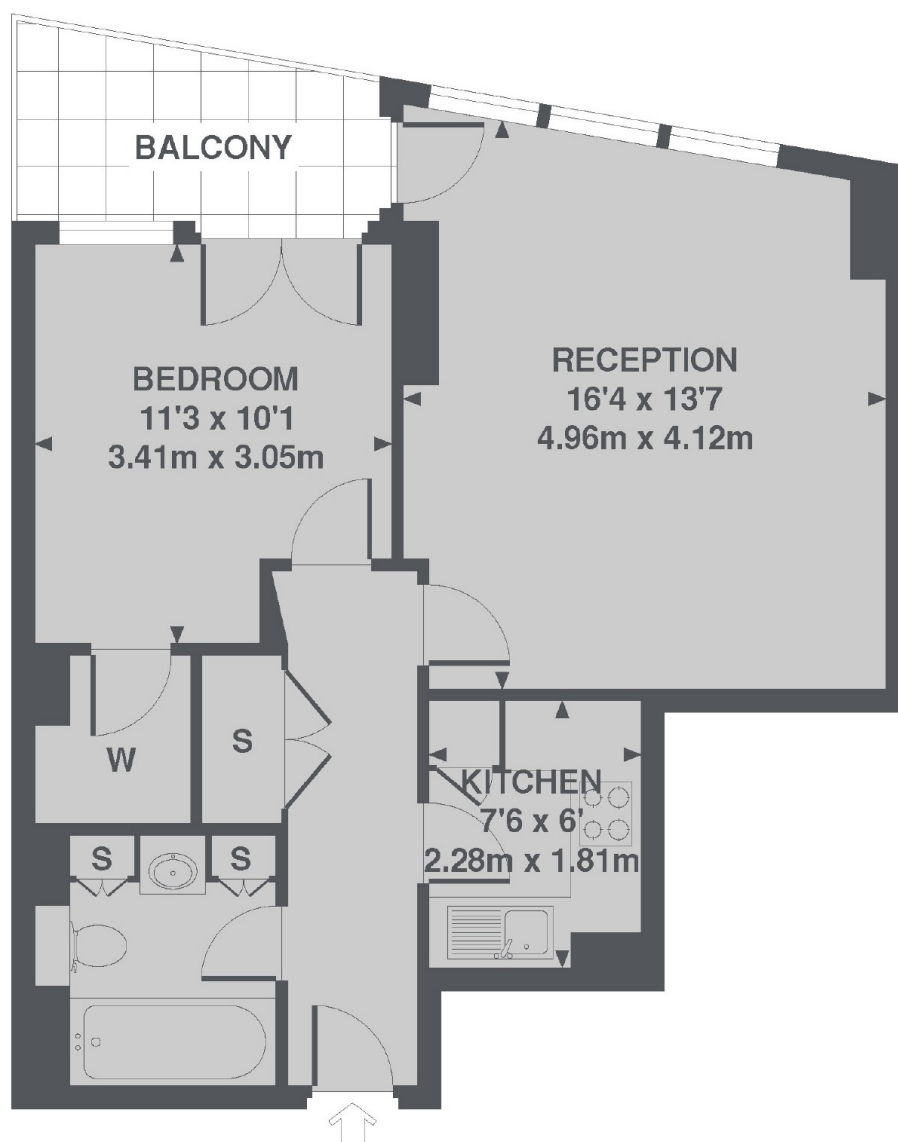
- High Floor
- Riverside Development
- Separate Kitchen
- Large Windows
- Private Balcony
- On-Site Resident Facilities



Fairmont Avenue, E14



Fairmont Avenue, London, E14



8TH FLOOR

TOTAL APPROX. FLOOR AREA 504 SQ. FT. (46.8 SQ. M.)

Dexters

Canary Wharf East
39 Westferry Road
London
E14 8JH
Lettings
020 7590 9550

Energy Rating: B. We aim to make our particulars both accurate and reliable. However they are not guaranteed; nor do they form part of an offer or contract. If you require clarification on any points then please contact us, especially if you're traveling some distance to view. Please note that appliances and heating systems have not been tested and therefore no warranties can be given as to their good working order.

 **RICS** | Regulated
Estate Agent
and Letting Agent

[dexters.co.uk](https://www.dexters.co.uk)