



Fairmont Avenue, E14

£692 Per week

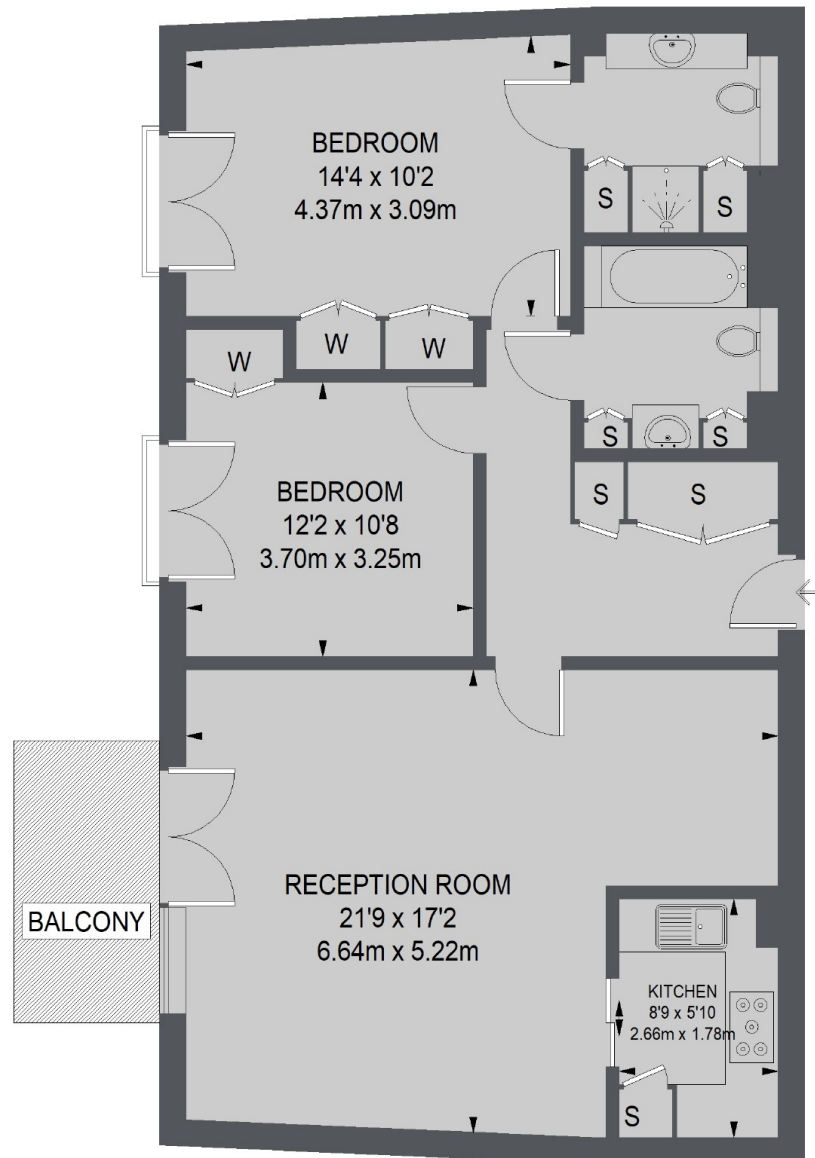
A large two bedroom apartment on the fifth floor (with lift) of this superior development. This river facing apartment has floor to ceiling windows, wooden flooring and on-site swimming pool and gym.

New Providence Wharf is moments from the shops, bars and restaurants of Canary Wharf, including the popular Le Relais de Venise.

Features

- Two Bedrooms
- Two Bathrooms
- Wooden Flooring
- Balcony
- Stunning Views
- Exceptionally Bright

Fairmont Avenue, London, E14



TOTAL APPROX. FLOOR AREA
904 SQ. FT. (83.95 SQ. M.)