



Lyell Street, E14

£657 Per week

A two bedroom apartment on a high floor of this dockside development. This dual aspect apartment has an open plan reception room, ample storage and a private balcony with waterside views.

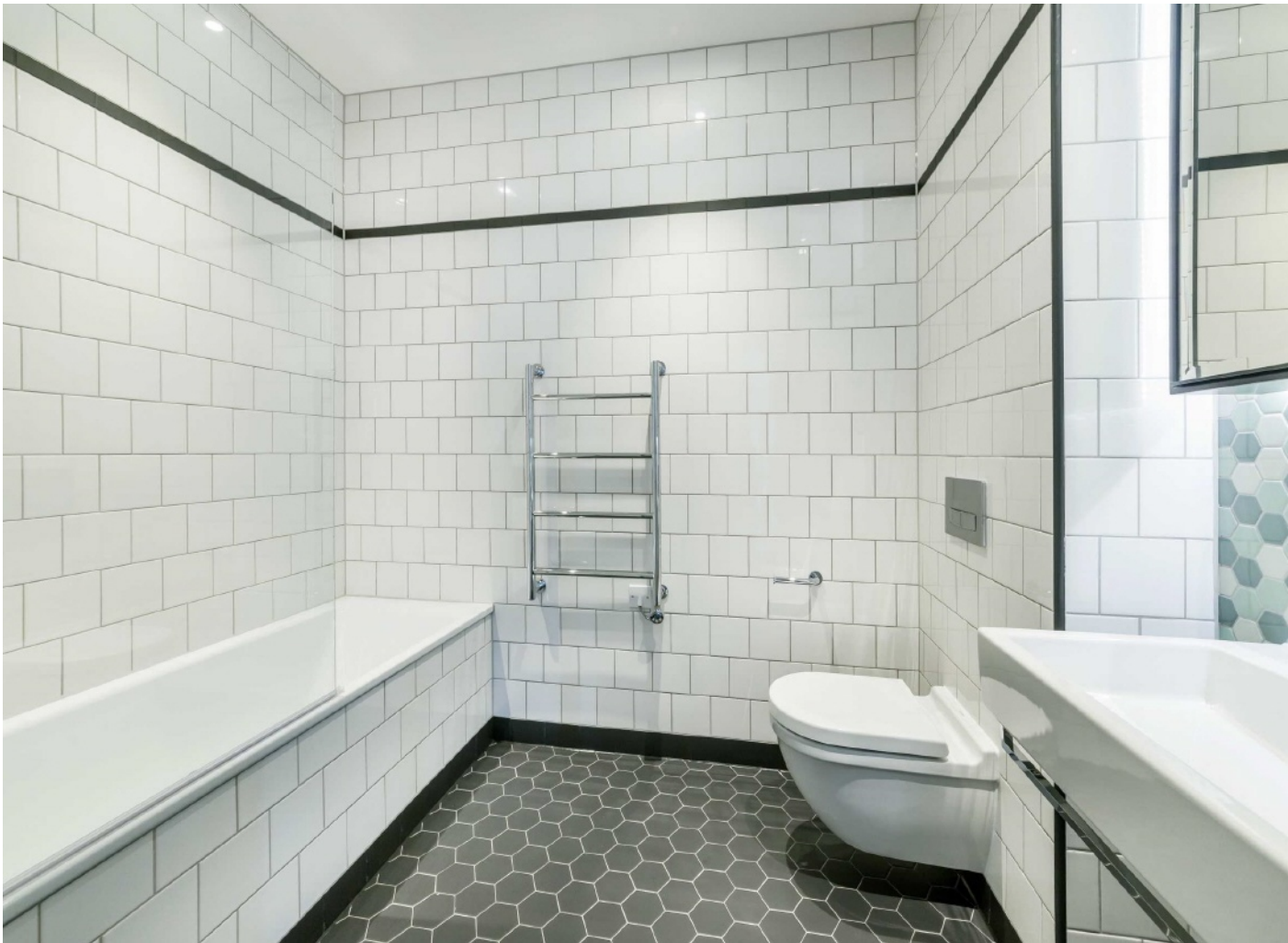
London City Island is moments from the shops, bars and restaurants of Canning Town. On-site facilities include a twenty four hour concierge, residents gym, outdoor swimming pool and treatment rooms.

Features

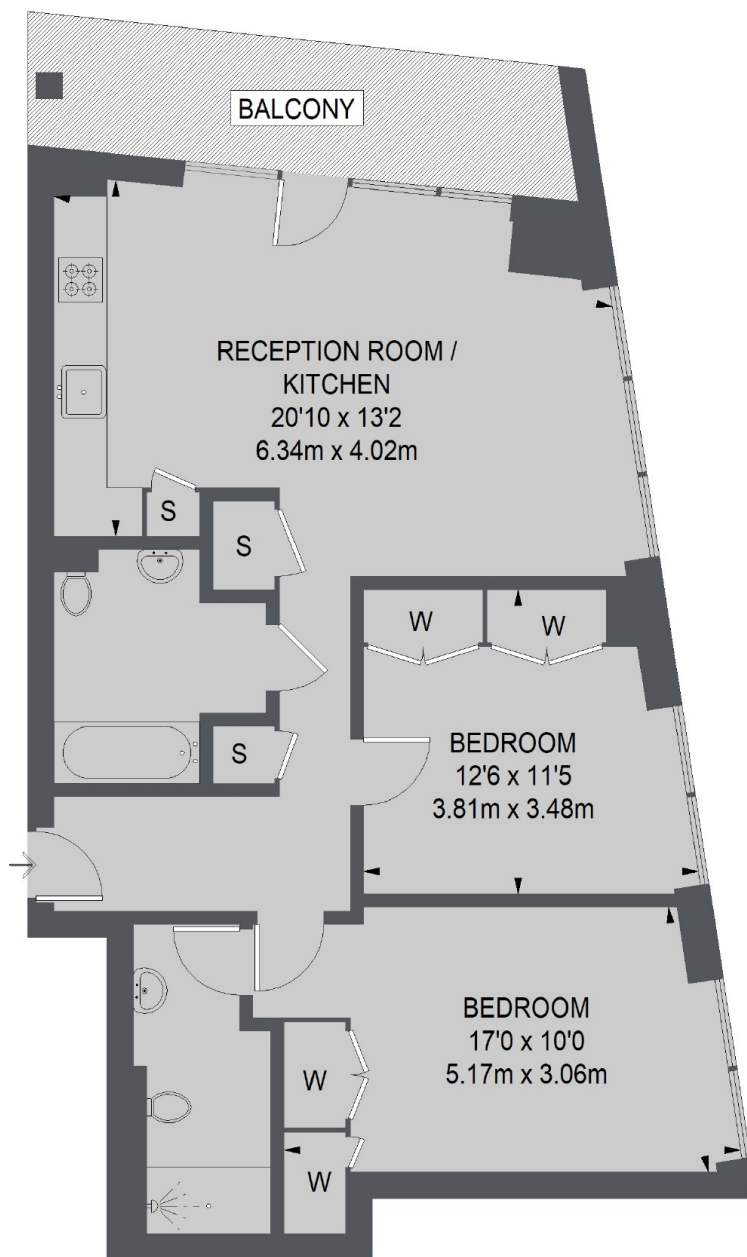
- High Floor
- Two Bedroom
- Furnished
- Dual Aspect
- City and River Views
- Residents Gym



Lyell Street, E14



Lyell Street,
London, E14



TOTAL APPROX. FLOOR AREA
807 SQ. FT. (75.00 SQ. M.)

Dexters

Canary Wharf East
39 Westferry Road
London
E14 8JH
Lettings
020 7590 9550

Energy Rating: B. We aim to make our particulars both accurate and reliable. However they are not guaranteed; nor do they form part of an offer or contract. If you require clarification on any points then please contact us, especially if you're traveling some distance to view. Please note that appliances and heating systems have not been tested and therefore no warranties can be given as to their good working order.

 **RICS** | Regulated
Estate Agent
and Letting Agent

[dexters.co.uk](https://www.dexters.co.uk)