



Limeharbour, E14

£484 Per week

A bright one bedroom apartment on the second floor of this sought after development. This apartment has an open plan reception room, wooden flooring and private balcony.

City Tower is moments away from the bars and restaurants of South Quay, including the popular Lotus Floating Restaurant.

Features

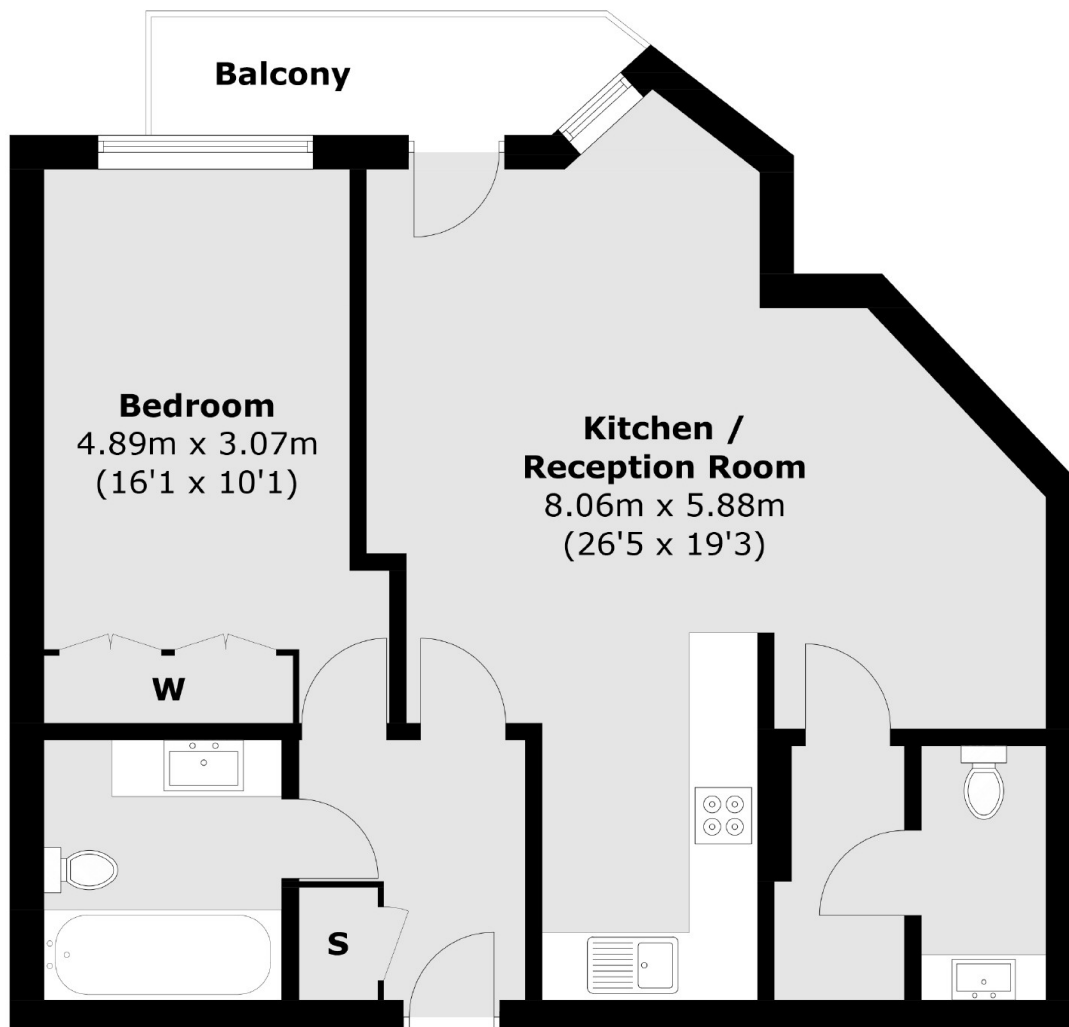
- One Bathroom
- One Bedroom
- Private Balcony
- Wooden Flooring
- Open Plan
- Concierge



Limeharbour, E14



Limeharbour,
London, E14



Second Floor

Total area (approx.): 61.5 sq. m (662.0 sq. ft)
Balcony area (approx.): 4.2 sq. m (45.2 sq. ft)

Dexters

Canary Wharf East
39 Westferry Road
London
E14 8JH
Lettings
020 7590 9550

Energy Rating: C. We aim to make our particulars both accurate and reliable. However they are not guaranteed; nor do they form part of an offer or contract. If you require clarification on any points then please contact us, especially if you're traveling some distance to view. Please note that appliances and heating systems have not been tested and therefore no warranties can be given as to their good working order.

 **RICS** | Regulated
Estate Agent
and Letting Agent

dexters.co.uk