



Orchard Place, E14

£692 Per week

A mid-floor two bedroom two bathroom apartment located in Goodluck Hope. With an open plan reception, wood flooring, built-in storage and private balcony with direct river views.

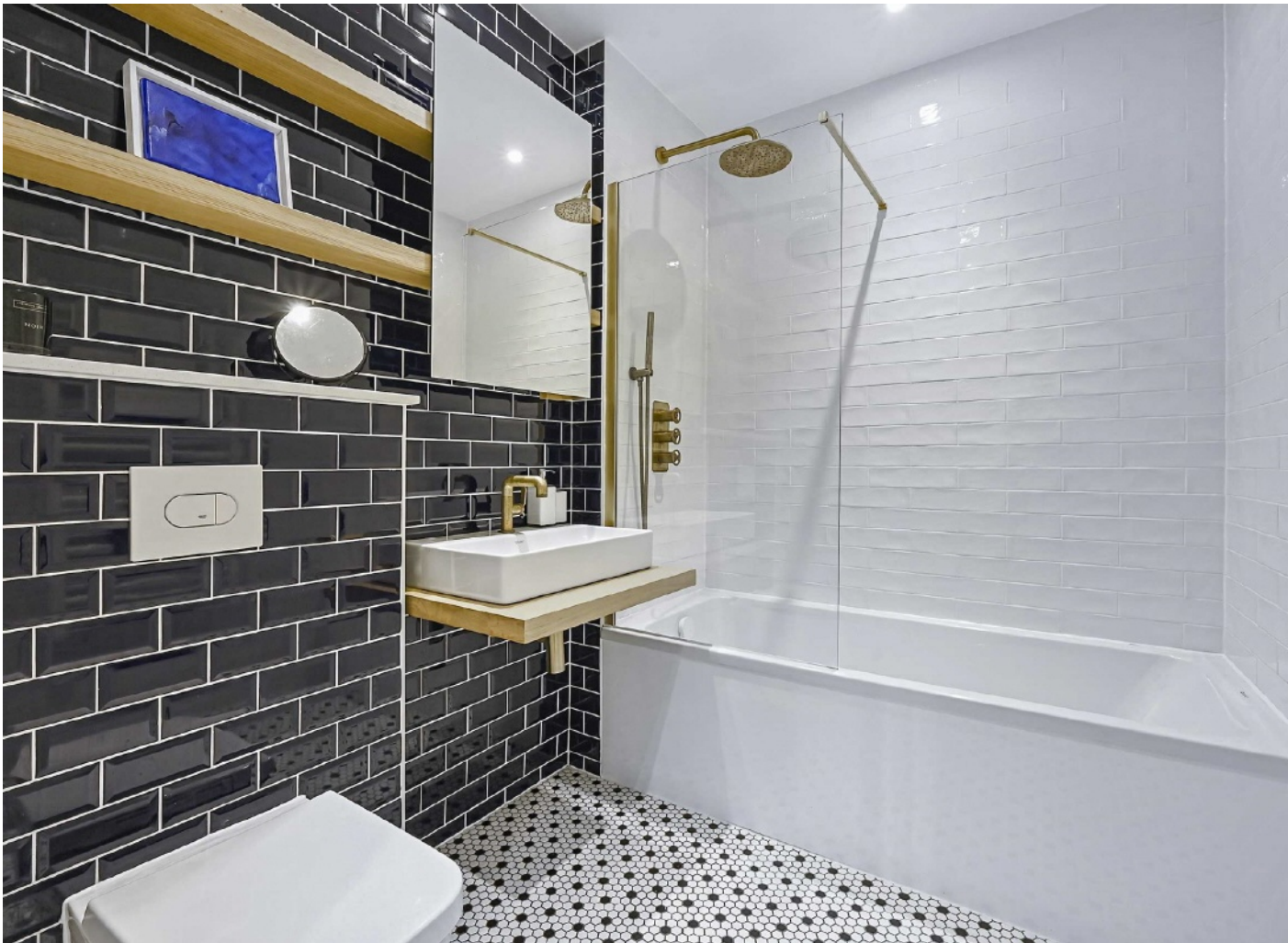
Goodluck Hope is moments from the shops, bars and restaurants of Canning Town. On-site facilities include a 24 hour concierge, a residents gym, health spa, cinema room and swimming pool.

Features

- Mid-Floor Position
- Two Bedrooms
- Two Bathrooms
- Built In Storage
- Private Balcony
- River Views

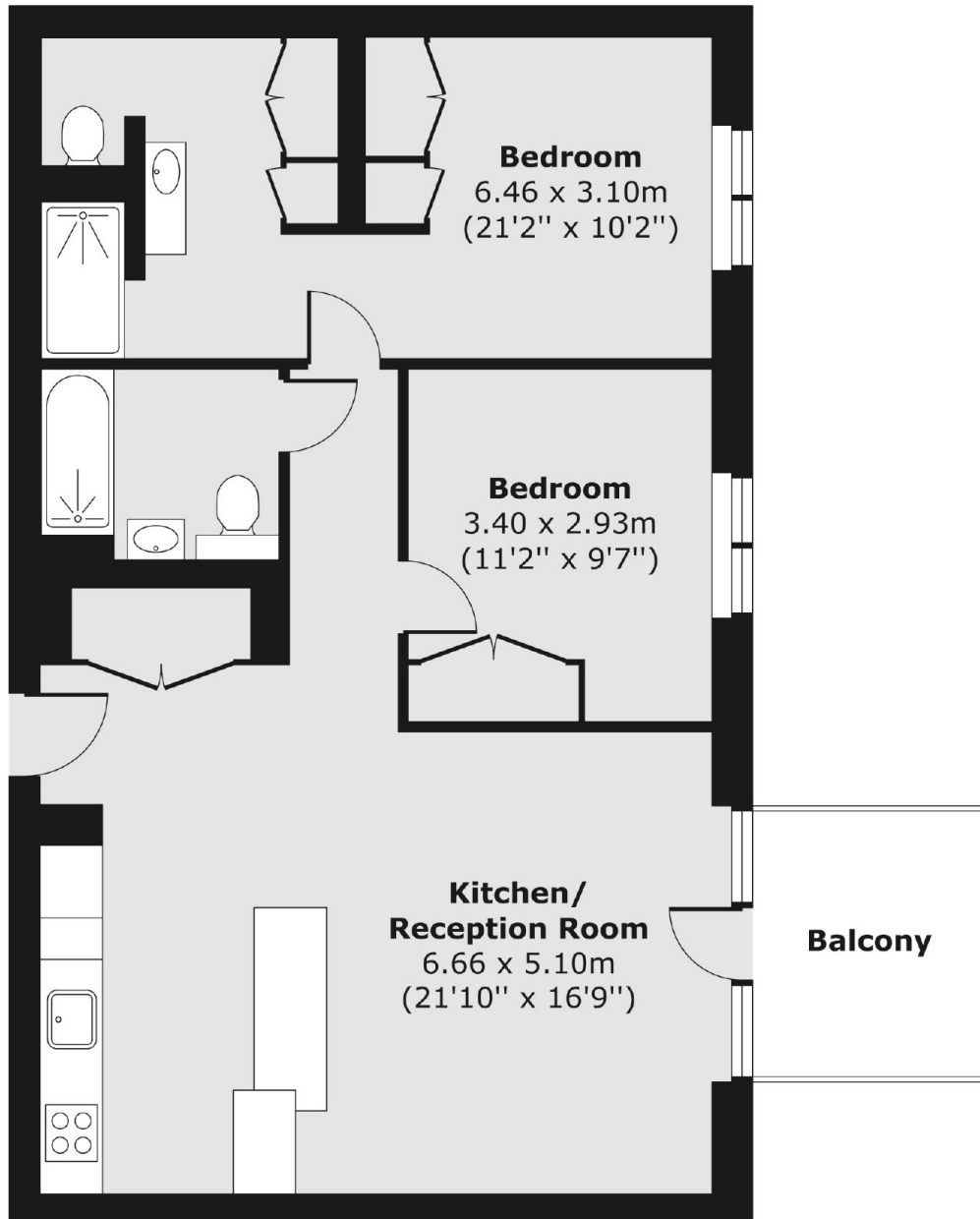


Orchard Place, E14



Orchard Place, London, E14

Fourth Floor



Total area (approx.) 72.55 sq. m (781 sq. ft)

Balcony area (approx.) 5.81 sq. m (63 sq. ft)