



Lyell Street, E14

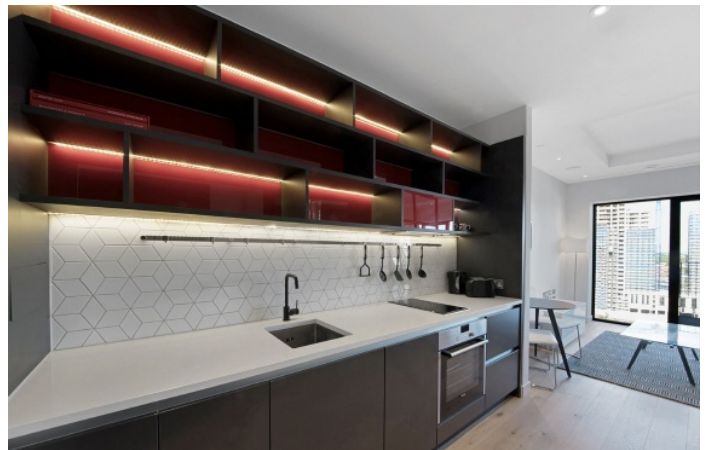
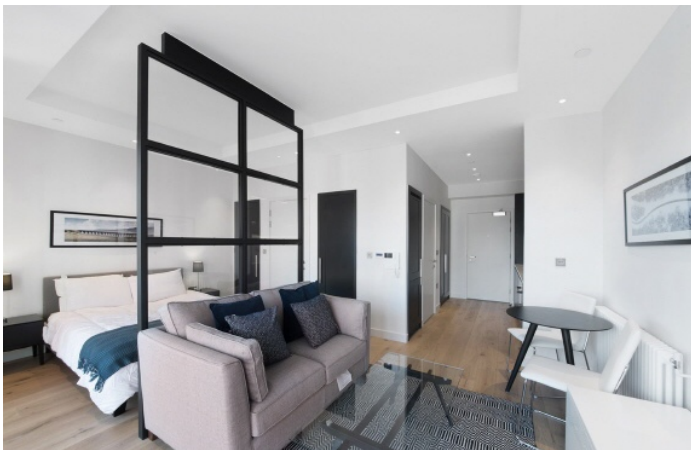
£426 Per week

Studio apartment set on a high floor within the London City Island development. The property has an open plan reception and dining area, modern integrated kitchen and dedicated sleeping area with built-in wardrobes.

London City Island is a modern development within walking distance of the shops, bars and restaurants of Canning Town and Canary Wharf.

Features

- Studio Apartment
- High Floor
- Private Balcony
- Built-In Storage
- Concierge Service
- Residents Facilities



Lyell Street, E14



Lyell Street,
London, E14

Dexters

Canary Wharf East
39 Westferry Road
London
E14 8JH
Lettings
020 7590 9550

Energy Rating: B. We aim to make our particulars both accurate and reliable. However they are not guaranteed; nor do they form part of an offer or contract. If you require clarification on any points then please contact us, especially if you're traveling some distance to view. Please note that appliances and heating systems have not been tested and therefore no warranties can be given as to their good working order.



[dexters.co.uk](https://www.dexters.co.uk)