



Western Gateway, E16

£380 Per week

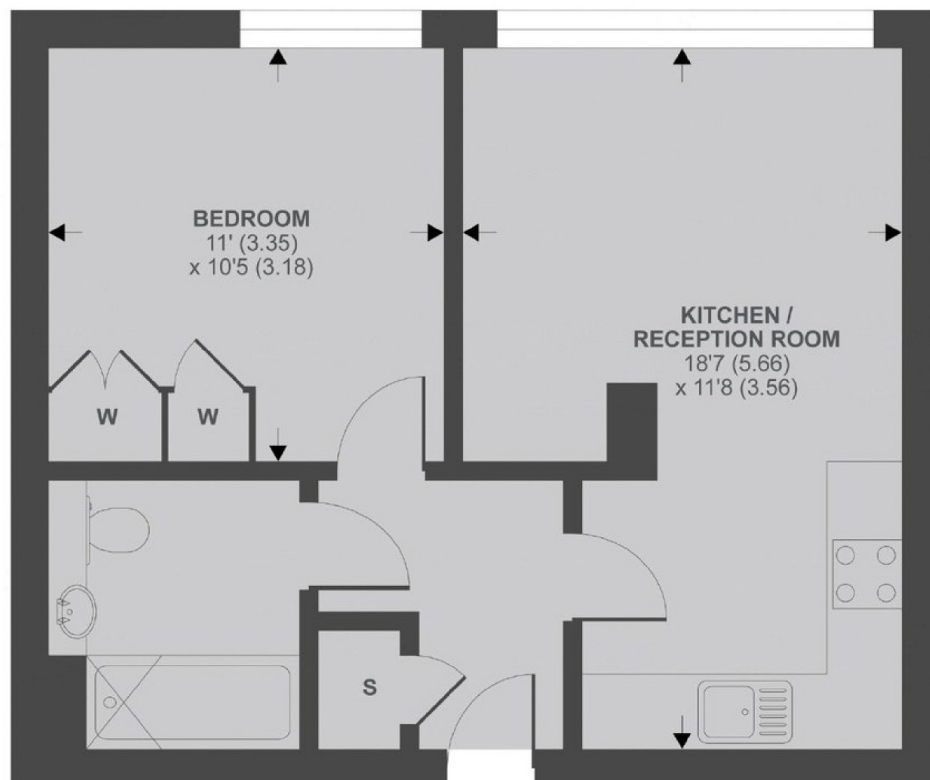
A one bedroom apartment on the raised ground floor of this sought after development. This bright apartment has an open plan reception room, dock views and parking via separate negotiation.

Adriatic Apartments is well located for the water sports, bars, and restaurants of Royal Victoria Docks including the popular China Palace.

Features

- One Bedroom
- One Bathroom
- Raised Ground Floor
- Dock Views
- Residents Gym
- Concierge

Western Gateway, London, E16



Ground Floor

Western Gateway, E16

APPROX FLOOR AREA 421 SQ.FT. 39.1 SQ.M

Copyright nichecom.co.uk 2018 REF : 327351

Dexters

Canary Wharf
39 Westferry Road
London
E14 8JH
Lettings
0207 517 1190

Energy Rating: . We aim to make our particulars both accurate and reliable. However they are not guaranteed; nor do they form part of an offer or contract. If you require clarification on any points then please contact us, especially if you're traveling some distance to view. Please note that appliances and heating systems have not been tested and therefore no warranties can be given as to their good working order.

 **RICS** | Regulated
Estate Agent
and Letting Agent

dexters.co.uk