



## Crews Street, E14

### £425,000

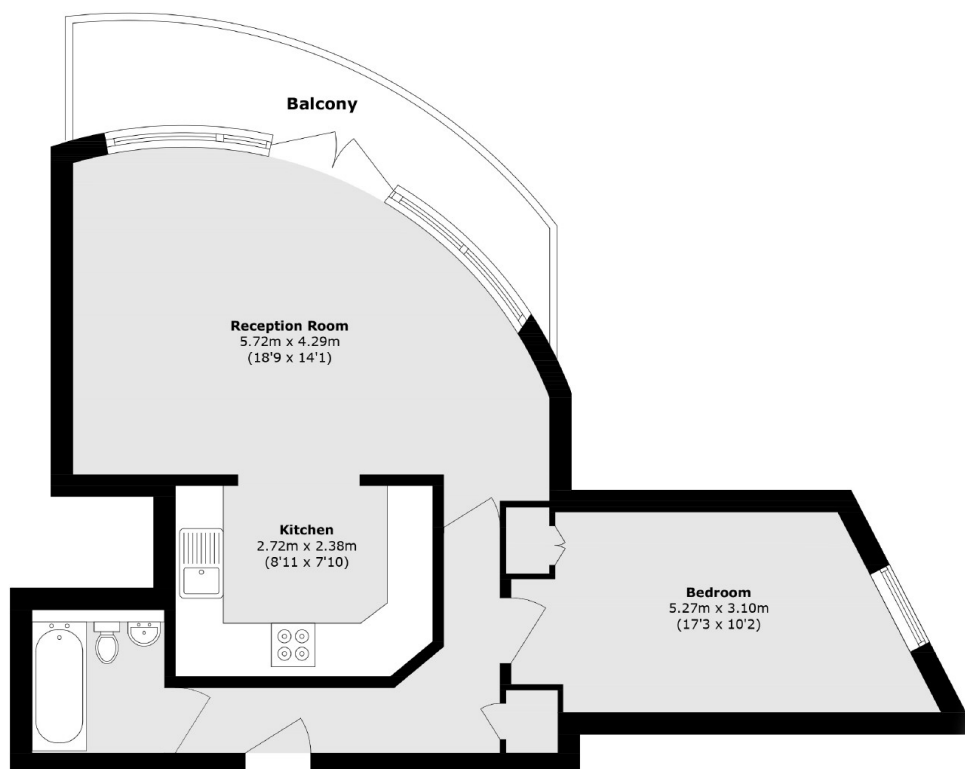
Offered to the market with no onward chain, this beautiful river-facing home boasts its own private balcony and stunning views across to Greenwich. The property features wooden flooring throughout, an allocated parking space, concierge services, and access to residents' facilities.

Crews Street is conveniently located just 0.6 miles from Mudchute DLR station, providing excellent transport links across the City and beyond.

### Features

- River Facing
- Private Balcony
- Allocated Parking
- Concierge Services
- Resident Facilities
- Chain Free

# Crews Street, London, E14



Total area (approx.): 61.2 sq. m (658.7 sq. ft)  
Balcony area (approx.): 10.5 sq. m (113.0 sq. ft)

## Dexters

Wapping  
123 Wapping High Street  
London  
E1W 3NX  
Sales  
020 7650 5350

Energy Rating: C. We aim to make our particulars both accurate and reliable. However they are not guaranteed; nor do they form part of an offer or contract. If you require clarification on any points then please contact us, especially if you're traveling some distance to view. Please note that appliances and heating systems have not been tested and therefore no warranties can be given as to their good working order.

 **RICS** | Regulated  
Estate Agent  
and Letting Agent

[dexters.co.uk](https://www.dexters.co.uk)