



Fairmont Avenue, E14

£1,615 Per week

A three-bedroom, four-bathroom, triple-aspect penthouse apartment offering 2,834 square feet of spacious living. The home includes unrivalled views of the River Thames and The O2 Arena, interior-designed fixtures and fittings, a large terrace with a 360-degree view, and a sauna.

New Providence Wharf boasts excellent on-site facilities, including a 24-hour concierge, site security, a swimming pool, an exceptionally large gym, and valet parking. It is located within close proximity to Blackwall DLR station, providing easy access to Canary Wharf, The City, and City Airport.

Features

- Three Bedrooms
- Three Bathrooms
- South Facing Aspect
- Private Terrace
- Residents Facilities
- Concierge Service

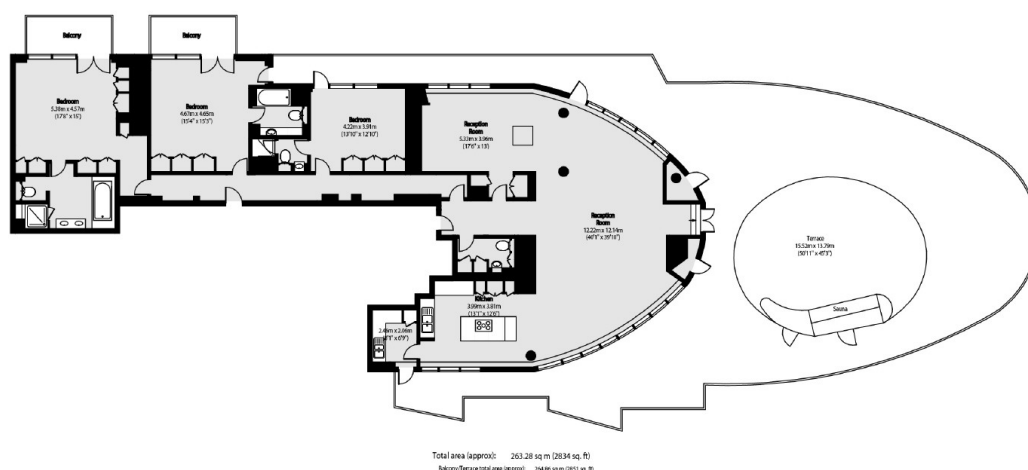


Fairmont Avenue, E14

This three-bedroom luxury home is located in the sought-after New Providence Wharf development. The accommodation comprises an entrance hall with access to all three bedrooms and the reception room. Bedrooms one and two each have their own balcony, while bedroom three has access to the terrace. The bathrooms and kitchen feature modern designs, and the reception room offers a dual-aspect view. Residents can enjoy access to leisure facilities, concierge service, security, and valet parking.



Fairmont Avenue, London, E14



Dexters

Canary Wharf East
39 Westferry Road
London
E14 8JH
Lettings
020 7590 9550

Energy Rating: C. We aim to make our particulars both accurate and reliable. However they are not guaranteed; nor do they form part of an offer or contract. If you require clarification on any points then please contact us, especially if you're traveling some distance to view. Please note that appliances and heating systems have not been tested and therefore no warranties can be given as to their good working order.

 **RICS** | Regulated
Estate Agent
and Letting Agent

[dexters.co.uk](https://www.dexters.co.uk)