

## Cassilis Road, E14

**£438** Per calendar month

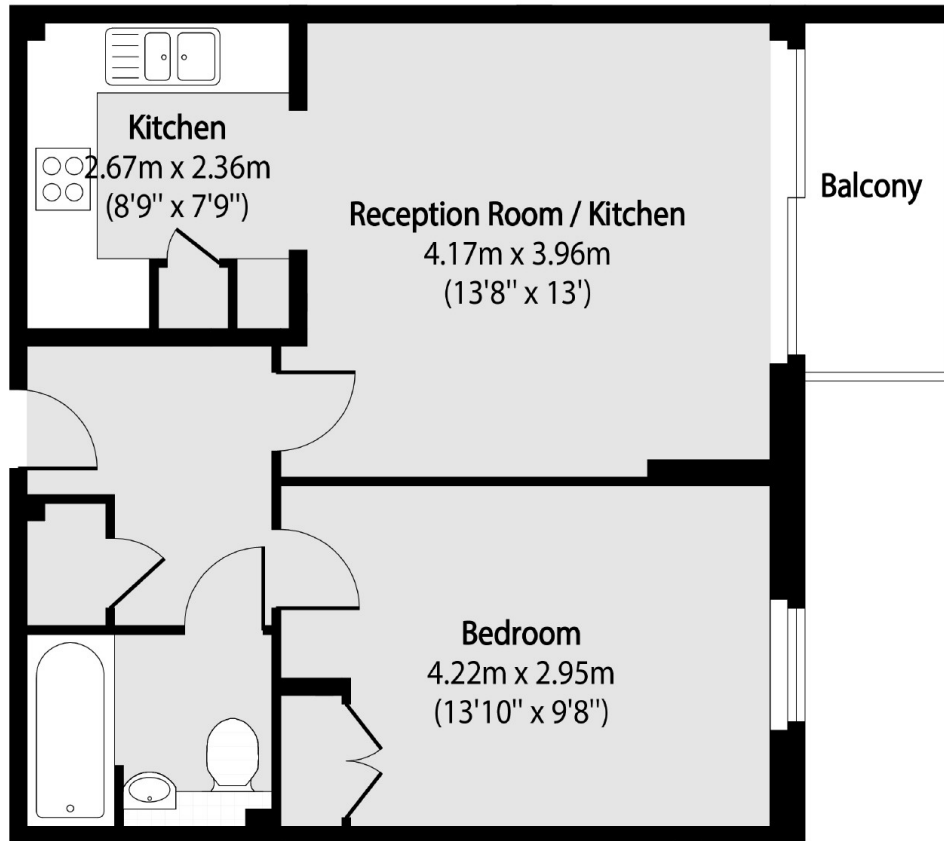
A one bedroom property on the third floor located within the Canary Central development. This property has an open plan reception, wood flooring, built in storage and a private balcony. Indoor heated pool, sauna and a fully equipped gymnasium.

Moore House is moments away from South Quay and the restaurants, bars and amenities in Canary Wharf.

### Features

- One Bedroom
- Wooden Flooring
- Balcony
- Resident Gym Facilities
- 24 Hour Concierge
- Secure Gated Development

# Cassilis Road, London, E14



Total area (approx): 45.34 sq m (488 sq. ft)

Balcony total area (approx): 3.71 sq m (40 sq. ft)