



## St. Davids Square, E14

### £700,000

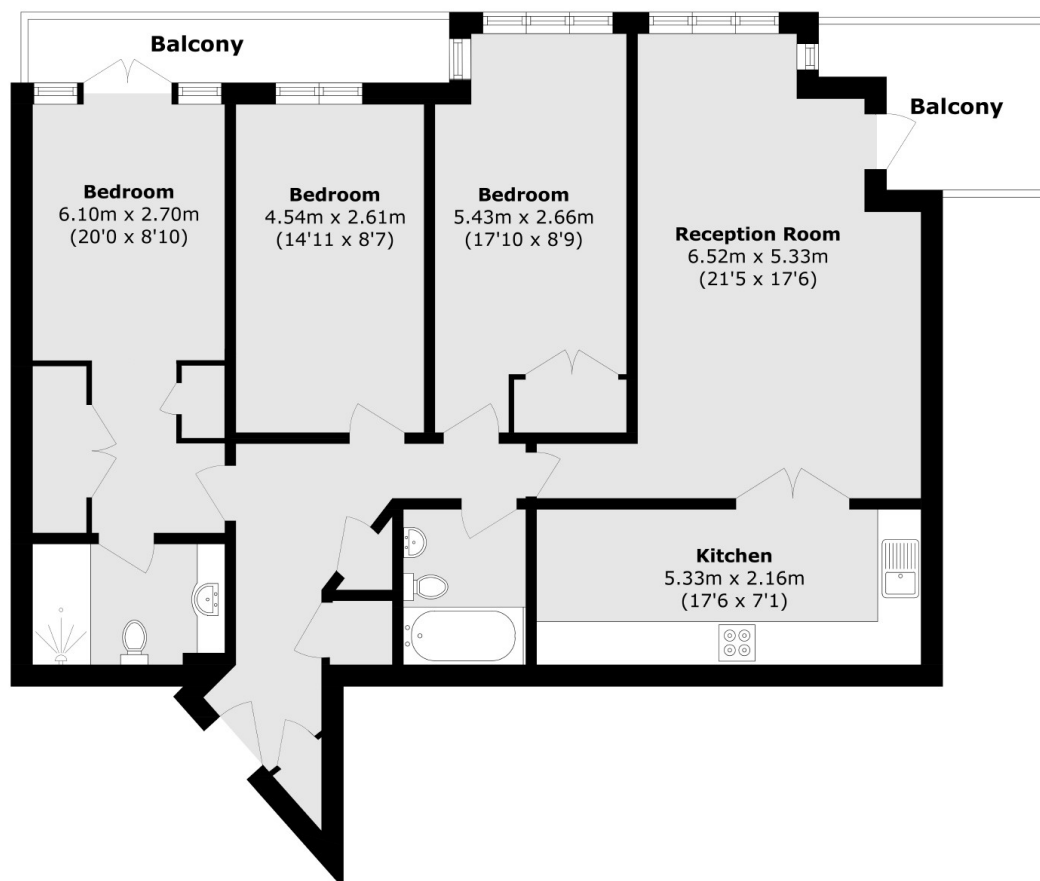
Welcome to this beautifully presented riverside residence, ideally situated on the sought-after Isle of Dogs. This impressive home boasts three generously sized double bedrooms, offering ample space for both relaxation and entertaining. Enjoy the luxury of a private balcony with tranquil views, perfect for unwinding after a long day. Further benefits include an allocated parking space, a 24-hour concierge service providing convenience and peace of mind, as well as exclusive access to a range of resident-only facilities. This superb property combines modern living with a prime waterside location, making it an ideal choice for professionals, families, or investors alike.

St David's Square is conveniently located just 0.2 miles from Island Gardens DLR station, providing excellent transport links across the City and to Canary Wharf.

### Features

- River Facing
- Three Double Bedrooms
- Allocated Parking
- 24 Hour Concierge
- Resident Facilities
- Two Private Balconies

# St. Davids Square, London, E14



Total area (approx.): 101.3sq. m (1090.3 sq. ft)

Balcony area (approx.): 11.3 sq. m (121.6 sq. ft)

## Dexters

Canary Wharf  
39 Westferry Road  
London  
E14 8JH

Sales  
020 7517 1199

Energy Rating: . We aim to make our particulars both accurate and reliable. However they are not guaranteed; nor do they form part of an offer or contract. If you require clarification on any points then please contact us, especially if you're traveling some distance to view. Please note that appliances and heating systems have not been tested and therefore no warranties can be given as to their good working order.

 **RICS** | Regulated  
Estate Agent  
and Letting Agent

dexters.co.uk