



Limeharbour, E14

£450,000

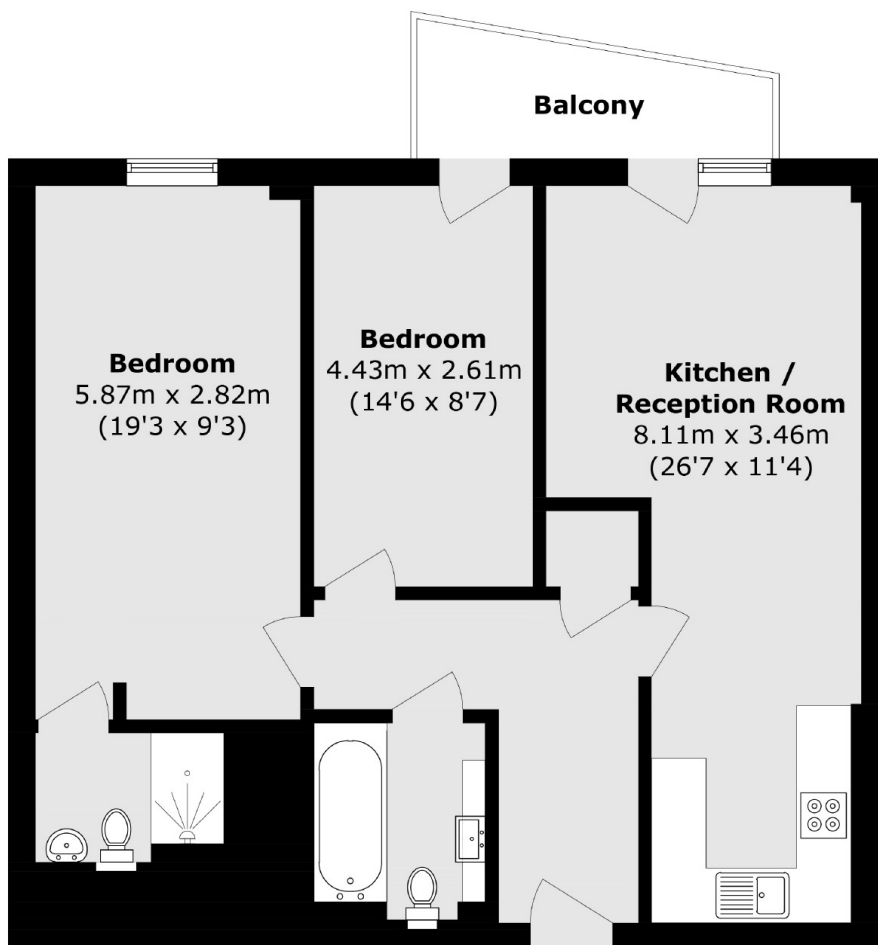
Offered to the market on a chain free basis is this charming two bedroom two bathroom home. The property also includes a private balcony, concierge services and a large communal garden.

City Tower is ideally for Canary Wharf and The City, as well as Crossharbour DLR station which provides good connections further into both the Wharf, Bank and City airport. Canary Wharf has a wide variety of shops restaurants and bars as well as Waitrose supermarket.

Features

- Two Double Bedrooms
- Two Bathrooms
- Chain Free
- Private Balcony
- Concierge Service
- Large Communal Garden

Limeharbour, London, E14



Total area (approx.): 73.6 sq. m (792.2 sq. ft)

Balcony area (approx.): 4.7 sq. m (50.6 sq. ft)