



Chrisp Street, E14

£634 Per week

A well-proportioned three bedroom apartment with an open plan reception, wood flooring and private balcony. Boasting two bathrooms, bright, inviting spaces and an integrated kitchen.

Parkview Apartments is located within 0.1 miles of Langdon Park DLR service, in addition to being within a brief walk of the attractive amenities of central Canary Wharf.

Features

- Three Bedrooms
- Two Bathrooms
- Open Plan Reception
- Wood Flooring
- Private Balcony
- Contemporary Development

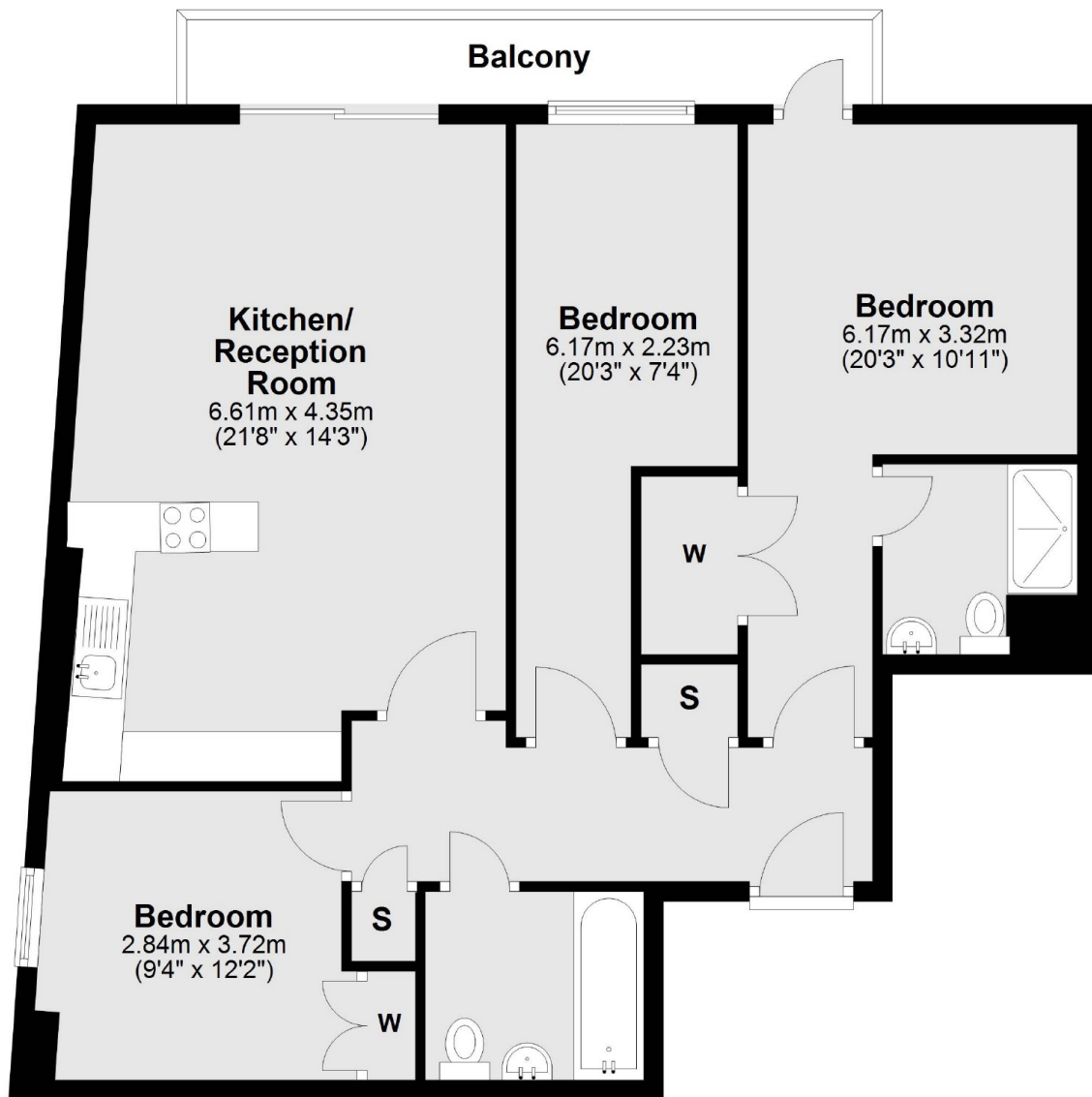


Chrisp Street, E14



Chrisp Street,
London, E14

Eighth Floor



Total area: approx. 84.7 sq. metres (911.9 sq. feet)

Dexters

Canary Wharf East
39 Westferry Road
London
E14 8JH
Lettings
020 7590 9550

Energy Rating: B. We aim to make our particulars both accurate and reliable. However they are not guaranteed; nor do they form part of an offer or contract. If you require clarification on any points then please contact us, especially if you're traveling some distance to view. Please note that appliances and heating systems have not been tested and therefore no warranties can be given as to their good working order.

RICS | Regulated
Estate Agent
and Letting Agent

dexters.co.uk