



South Quay Square, E14

£759 Per week

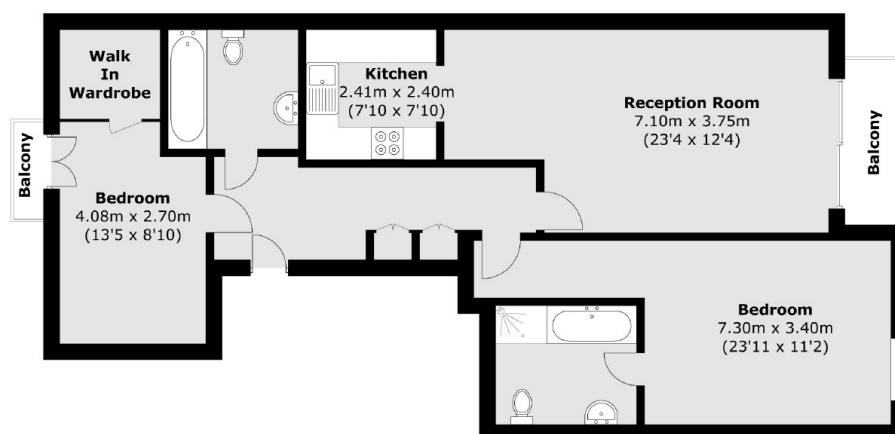
A well proportioned apartment on a high floor of this popular development. This property has two double bedrooms, two bathrooms, two balconies and on-site facilities.

Discovery Dock is less than a 5 minute walk to Canary Wharf Underground Station and within easy reach of the South Quay bars and restaurants.

Features

- Two Double Bedrooms
- Two Bathrooms
- High Floor
- Recently Decorated
- Dock Facing
- Gym and Concierge

South Quay Square, London, E14



Total area (approx.): 88.1 sq. m (948.3 sq. ft)
Balconies: 4.3 sq. m (46.2 sq. ft)

Dexters

Canary Wharf
39 Westferry Road
London
E14 8JH
Lettings
0207 517 1190

Energy Rating: . We aim to make our particulars both accurate and reliable. However they are not guaranteed; nor do they form part of an offer or contract. If you require clarification on any points then please contact us, especially if you're traveling some distance to view. Please note that appliances and heating systems have not been tested and therefore no warranties can be given as to their good working order.

 **RICS** | Regulated
Estate Agent
and Letting Agent

[dexters.co.uk](https://www.dexters.co.uk)