



## Guthridge Close, E14

£750 Per week

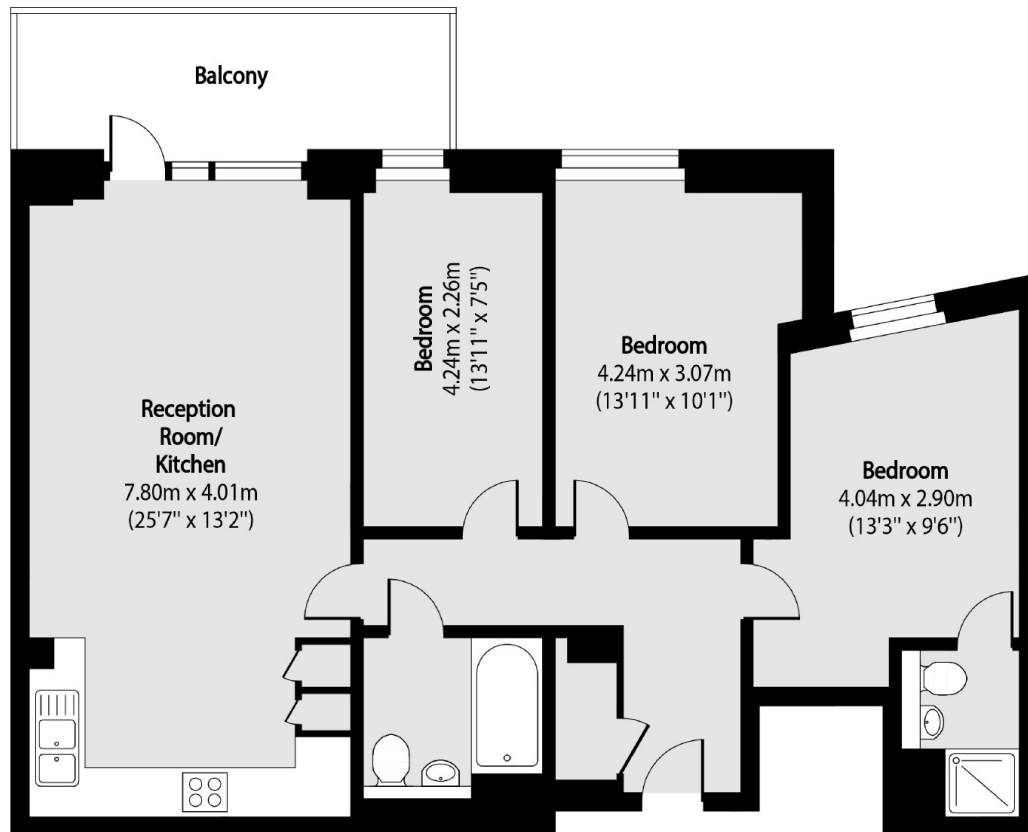
A modern large three bedroom apartment on the top floor (with lift) of this popular development. This bright apartment has an open plan reception room with wooden flooring, ample storage and a private balcony.

Steevans Court is within walking distance of Chrisp Street Market, and the shops, bars and restaurants of Canary Wharf.

### Features

Three Bedroom  
Two Bathroom  
Modern  
Furnished  
Available End Of May

# Guthridge Close, London, E14



Total area (approx): 84.63 sq m (911 sq. ft)

Balcony total area (approx): 9.29 sq m (100 sq. ft)