



## Limeharbour, E14

### £750,000

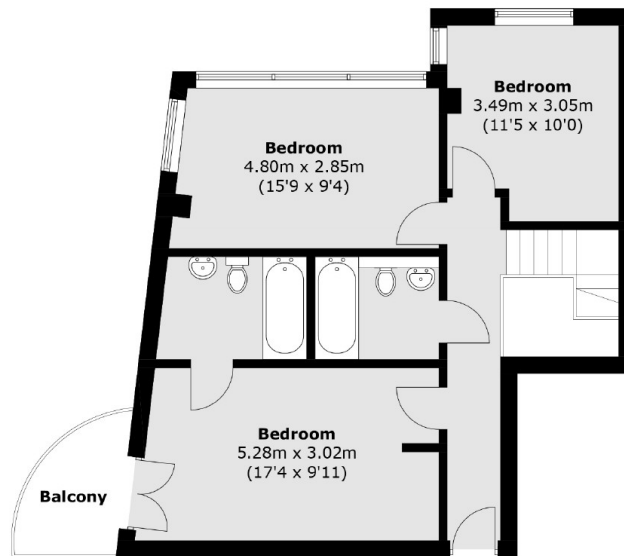
Welcome to this three bedroom split level home. The property also includes three balconies, two bathrooms, an additional WC, allocated parking space, concierge services and amazing views of the dock.

City Tower is ideally for Canary Wharf and The City, as well as Crossharbour DLR station which provides good connections further into both the Wharf, Bank and City airport. Canary Wharf has a wide variety of shops restaurants and bars as well as Waitrose supermarket.

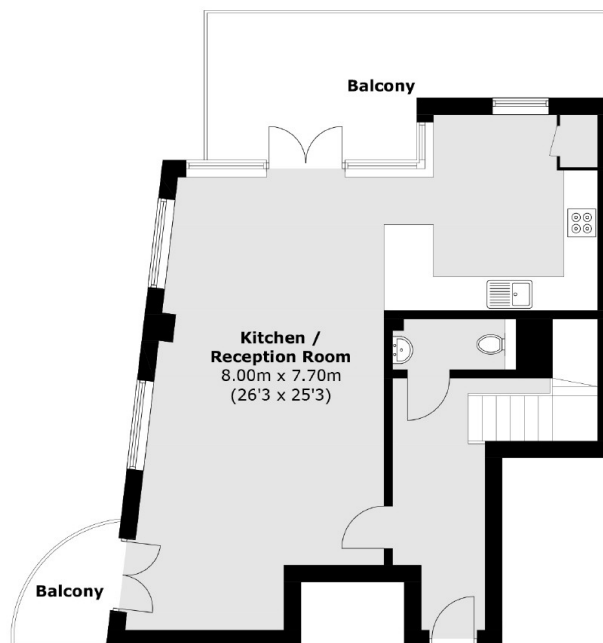
### Features

- Three Bedrooms
- Three Private Balconies
- Communal Garden
- Concierge Services
- Allocated Parking
- Views Of The Dock

# Limeharbour, London, E14



**Sixteenth Floor**



**Fifteenth Floor**

Total area (approx.): 118.3 sq. m (1,273.3 sq. ft)  
Balconies: 21.8 sq. m (234.6 sq. ft)