



Hammersley Road, E16

£330,000

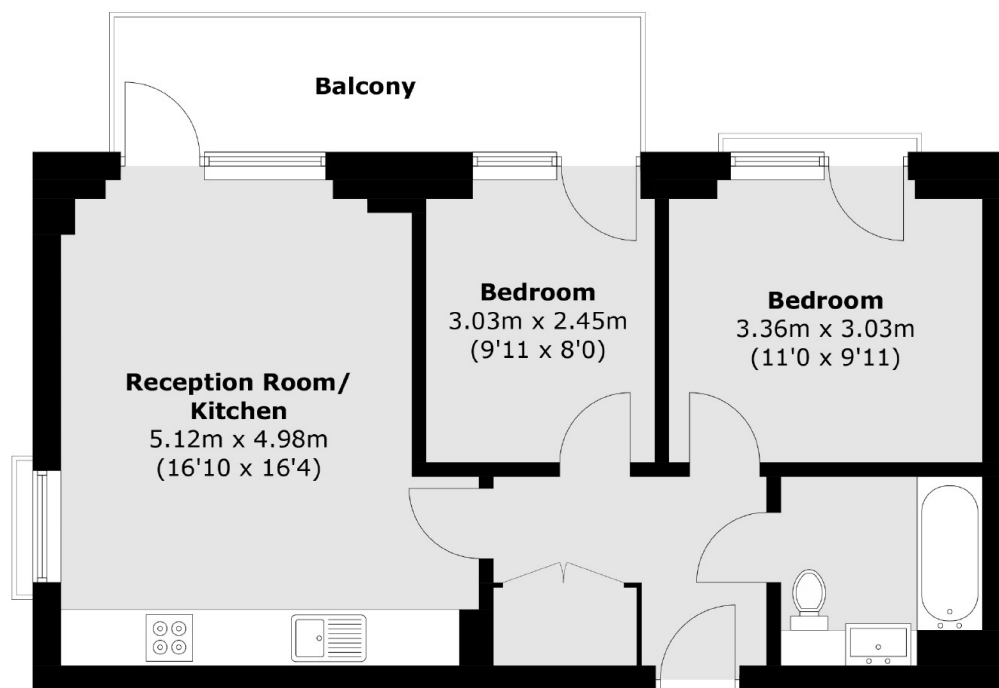
A two bedroom home located within Callisto Court with a private balcony. The property is in modern condition throughout and is being sold on a chain free basis.

Callisto Court is under a quarter of a mile from Canning Town Underground Station (Jubilee Line and the DLR), Custom House Station (DLR and Crossrail) and the Emirates Air Line provides a direct link to the O2 Greenwich Area and North Greenwich Tube Station.

Features

- 558 Sq.Ft
- Two Bedrooms
- Private Balcony
- Modern Throughout
- Chain Free
- Close To Tube Station

Hammersley Road, London, E16



Total area (approx.): 51.9 sq. m (558.6 sq. ft)
Balcony: 8.1 sq. m (87.2 sq. ft)

Dexters

Canary Wharf
39 Westferry Road
London
E14 8JH
Sales
020 7517 1199

Energy Rating: B. We aim to make our particulars both accurate and reliable. However they are not guaranteed; nor do they form part of an offer or contract. If you require clarification on any points then please contact us, especially if you're traveling some distance to view. Please note that appliances and heating systems have not been tested and therefore no warranties can be given as to their good working order.

 **RICS** | Regulated
Estate Agent
and Letting Agent

[dexters.co.uk](https://www.dexters.co.uk)